

RELEASE DATE :12 February 2024

HOURS : 10:00

NUMBER: 49379

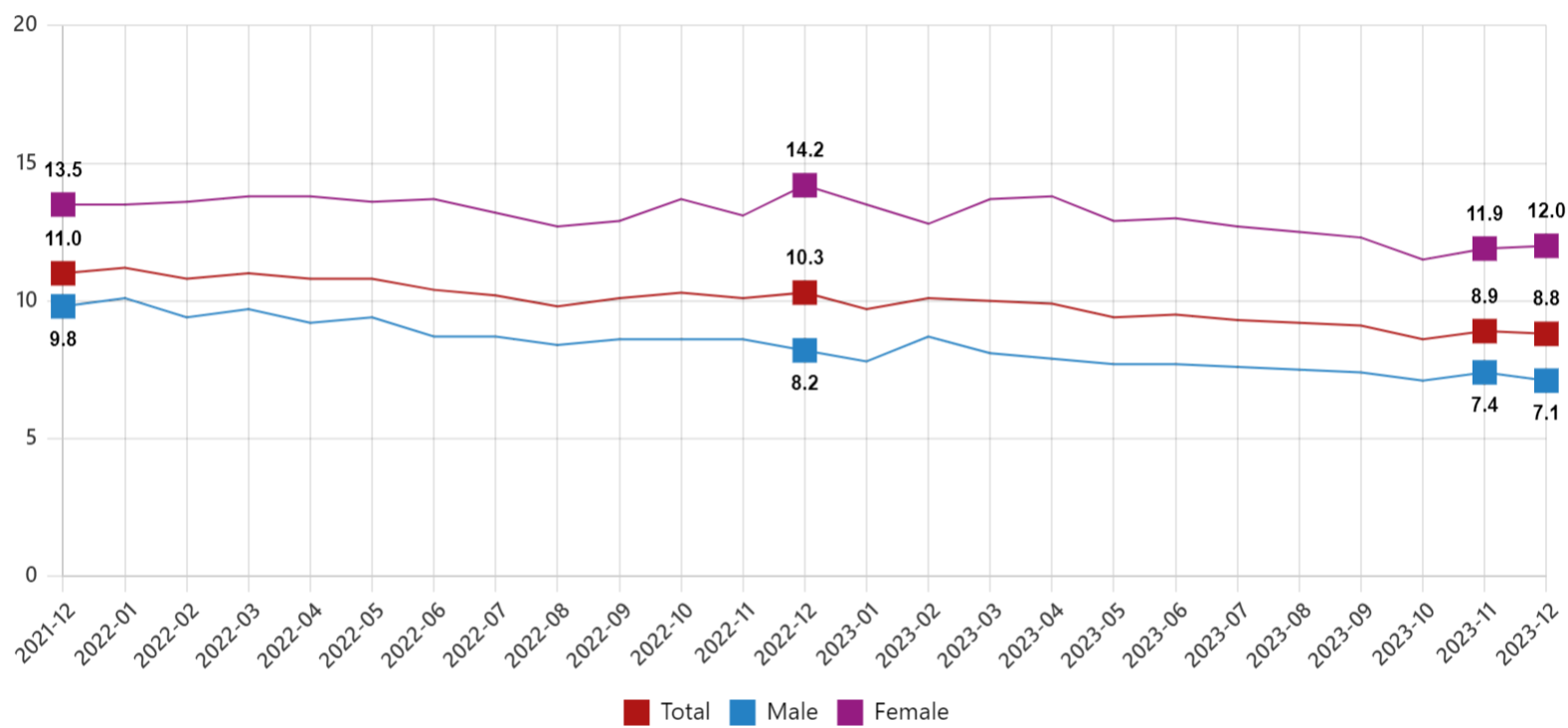
Labour Force Statistics, December 2023

Seasonally adjusted unemployment rate realized as 8.8%

According to Household Labour Force Survey; the number of unemployed persons aged 15 years old and over decreased by 12 thousand to 3 million 98 thousand persons in December 2023 compared to the previous month. As the unemployment rate estimated 8.8% with decreased by 0.1 percentage point compared to the previous month; it was estimated 7.1% for men and 12.0% for women.

Seasonally adjusted unemployment rate, December 2021 - December 2023

(%)

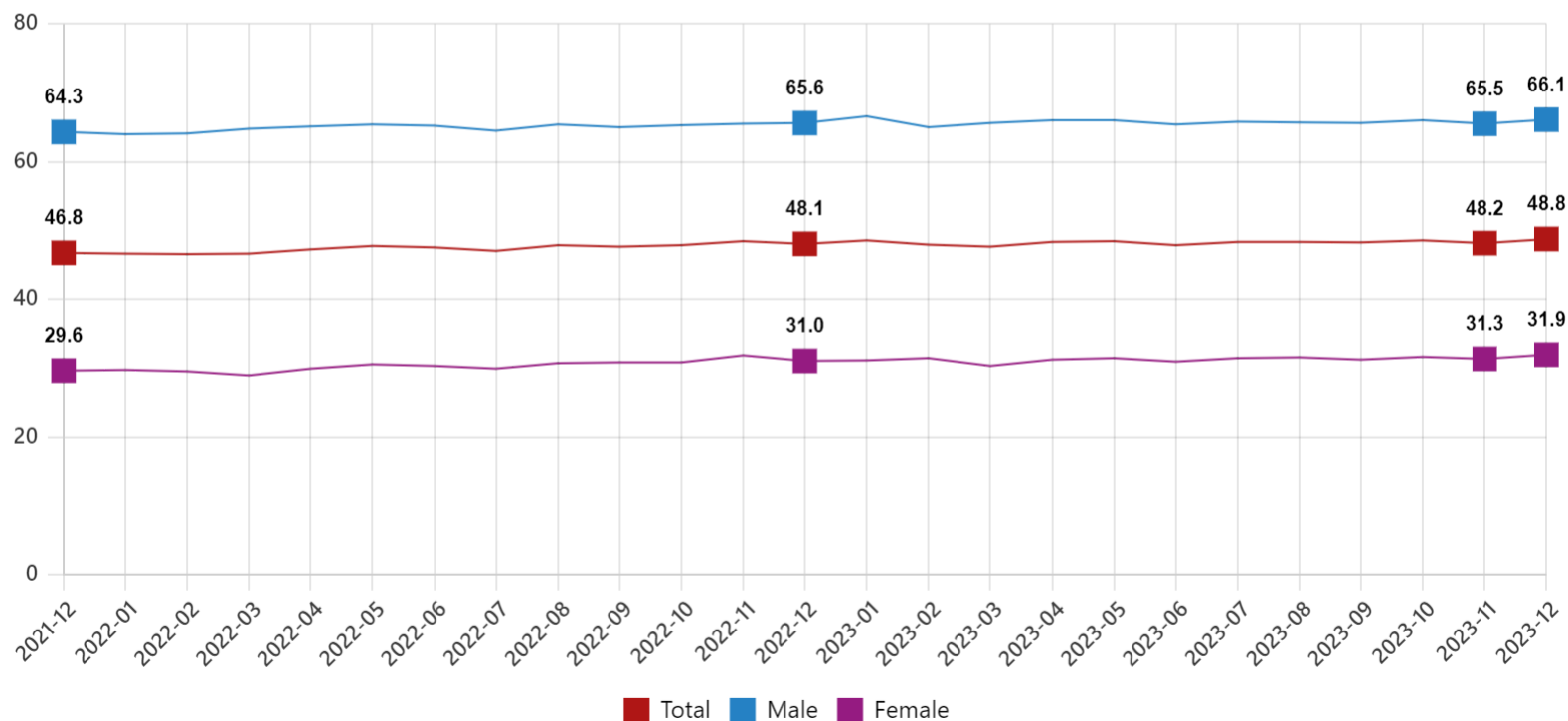


Seasonally adjusted employment rate realized as 48.8%

The number of employed persons increased by 399 thousand to 32 million 56 thousand persons in December 2023 compared to the previous month. The employment rate occurred as 48.8% with increased by 0.6 percentage point. In addition, this rate was 66.1% for men, 31.9% for women.

Seasonally adjusted employment rate, December 2021 - December 2023

(%)



Seasonally adjusted labour force participation rate realized as 53.5%

The number of persons in the labour force realized as 35 million 154 thousand persons with increased by 387 thousand persons in December 2023 compared to the previous month. Labour force participation rate was 53.5% with increased by 0.5 percentage point. Also this rate was 71.1% for men,

it was 36.3% for women.

Seasonally adjusted youth unemployment rate was 15.5%

The youth unemployment rate in the 15-24 age group was 15.5% with decreased by 0.8 percentage point compared to the previous month. While this rate was estimated 11.5% for men and 22.8% for women.

Seasonally adjusted main labour force indicators, 15+ age, December 2023

	December 2023			Previous month			Difference with the previous month		
	Total	Male	Female	Total	Male	Female	Total	Male	Female
(Thousand)									
Population 15 years and over	65 683	32 509	33 175	65 637	32 486	33 151	46	23	24
Labour force	35 154	23 126	12 027	34 767	22 991	11 777	387	135	250
Employment	32 056	21 476	10 580	31 657	21 285	10 372	399	191	208
Unemployment	3 098	1 650	1 447	3 110	1 706	1 404	-12	-56	43
Not in the labour force	30 530	9 382	21 147	30 870	9 495	21 374	-340	-113	-227
(%)									
Labour force participation rate	53.5	71.1	36.3	53.0	70.8	35.5	0.5	0.3	0.8
Employment rate	48.8	66.1	31.9	48.2	65.5	31.3	0.6	0.6	0.6
Unemployment rate	8.8	7.1	12.0	8.9	7.4	11.9	-0.1	-0.3	0.1
Youth unemployment rate (15-24 age)	15.5	11.5	22.8	16.3	13.6	21.4	-0.8	-2.1	1.4

Figures in table may not add up to totals due to rounding.

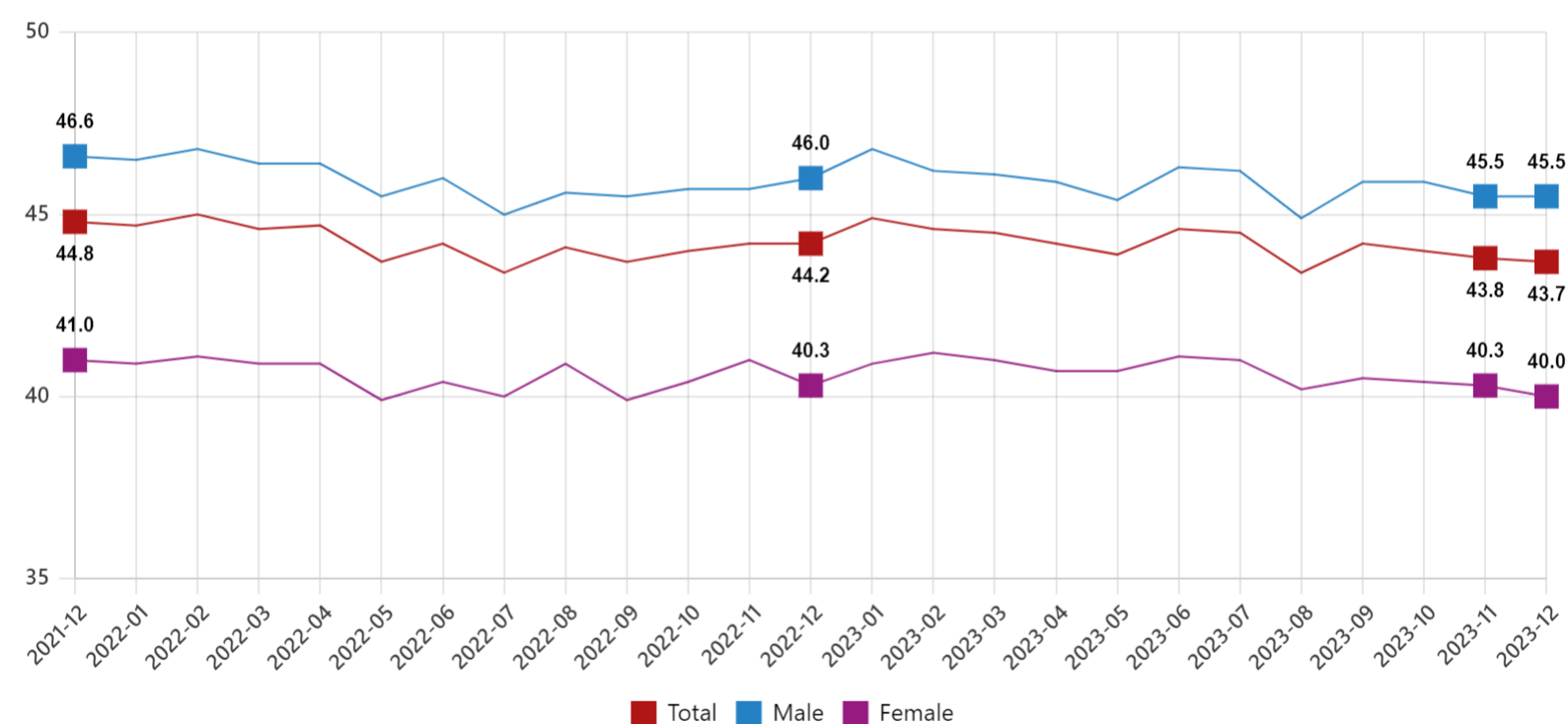
In accordance with the seasonal adjustment method, estimates for previous months are published after being revised.

Seasonally and calendar adjusted average weekly actual working hours was 43.7

Seasonally and calendar adjusted average weekly actual working hours of persons at work during the reference period estimated 43.7 hours with decreased by 0.1 hours compared to the previous month in December 2023.

Seasonally and calendar adjusted average weekly actual working hours, December 2021 - December 2023

(Hour)

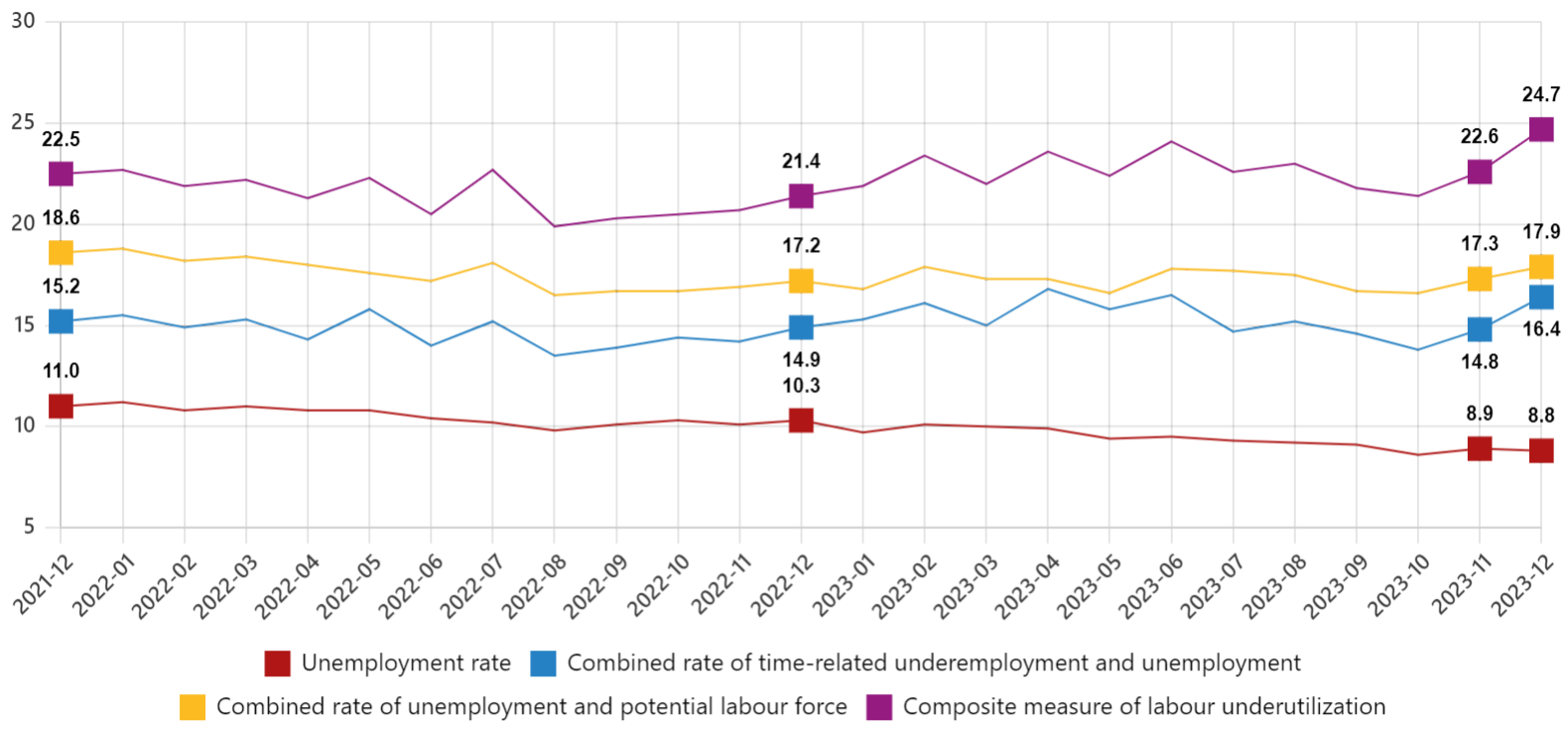


Seasonally adjusted composite measure of labour underutilization rate realized as 24.7%

In December 2023, the rate of composite measure of labour underutilization consisting of time-related underemployment, potential labour force and unemployment was 24.7% with increased by 2.1 percentage point compared to the previous month. While combined rate of time-related underemployment and unemployment realized as 16.4%, combined rate of unemployment and potential labour force estimated as 17.9%.

Seasonally adjusted supplementary labour force indicators, December 2021 - December 2023

(%)



The next release on this subject will be on February 19, 2024.