



stats sa

Department:
Statistics South Africa
REPUBLIC OF SOUTH AFRICA

Private Bag X44, Pretoria, 0001, South Africa, ISibalo House, Koch Street, Salvokop, Pretoria, 0002
www.statssa.gov.za, info@statssa.gov.za, Tel +27 12 310 8911

STATISTICAL RELEASE

P2041

Mining: Production and sales (Preliminary)

June 2024

Embargoed until:
13 August 2024
11:00

ENQUIRIES:
Juan-Pierre Terblanche
Tel: (012) 310 2965

FORTHCOMING ISSUE:
July 2024

EXPECTED RELEASE DATE:
12 September 2024

Dipalopalo tsa Aforikaborwa • Dipalopalo tsa Aforika Borwa • Ezazibalo zaseNingizimu Afrika • Tshitatistika Afrika Tshipembe • Tinhlayo Afrika-Dzonga
Statistieke Suid-Afrika • Dipalopalo tsa Aforika Borwa • Telubalo zaseNingizimu Afrika • EzeeNkcukacha maNani zoMzantsi Afrika • Iimibalobalo zeSewula Afrika

IMPROVING LIVES THROUGH DATA ECOSYSTEMS



Contents

Production: results for June 2024	2
Table A – Key growth rates in the volume of mining production.....	2
Table B – Seasonally adjusted index of the volume of mining production for the latest three months by mineral group and mineral (Base: 2019=100).....	2
Figure 1 – Volume of mining production (Base: 2019=100).....	3
Figure 2 – Volume of mining production (Base: 2019=100): year-on-year percentage change.....	3
Sales: results for June 2024	4
Table C – Key growth rates in mineral sales at current prices.....	4
Figure 3 – Total value of mineral sales at current prices.....	4
Tables	5
Table 1 – Index of the volume of mining production (Base: 2019=100).....	5
Table 2 – Year-on-year percentage change in the volume of mining production.....	5
Table 3 – Seasonally adjusted volume of total mining production.....	5
Table 4 – Index of the volume of mining production by mineral group and mineral (Base: 2019=100).....	6
Table 5 – Seasonally adjusted index of the volume of mining production by mineral group and mineral (Base: 2019=100).....	6
Table 6 – Year-on-year percentage change in the volume of mining production by mineral group and mineral.....	7
Table 7 – Contribution of each mineral group and mineral to the year-on-year percentage change in the volume of mining production (percentage points).....	7
Table 8 – Mineral sales at current prices (R million).....	8
Table 9 – Year-on-year percentage change in mineral sales at current prices.....	8
Table 10 – Seasonally adjusted total mineral sales at current prices.....	8
Table 11 – Mineral sales at current prices by mineral group and mineral (R million).....	9
Table 12 – Year-on-year percentage change in mineral sales at current prices by mineral group and mineral.....	9
Table 13 – Contribution of each mineral group and mineral to the year-on-year percentage change in mineral sales at current prices (percentage points).....	9
Explanatory notes	10
Technical notes	11
Glossary	12
Technical enquiries	12
General information	13

Production: results for June 2024

Table A – Key growth rates in the volume of mining production

	Jan-24	Feb-24	Mar-24	Apr-24	May-24	Jun-24
Year-on-year % change, unadjusted	-2,4	11,4	-4,2	1,4	1,3	-3,5
Month-on-month % change, seasonally adjusted	-0,7	5,1	-4,2	0,8	0,1	-1,6
3-month % change, seasonally adjusted ¹	0,1	-1,5	-1,3	0,3	-0,6	-0,9

¹ Percentage change between the previous three months and the three months ending in the month indicated.

Mining production decreased by 3,5% year-on-year in June 2024. The largest negative contributors were:

- gold (-12,6% and contributing -1,8 percentage points); and
- PGMs (-5,8% and contributing -1,7 percentage points) – see Tables 6 and 7.

Seasonally adjusted mining production decreased by 1,6% in June 2024 compared with May 2024. This followed month-on-month changes of 0,1% in May 2024 and 0,8% in April 2024 – see Table A.

Table B – Seasonally adjusted index of the volume of mining production for the latest three months by mineral group and mineral (Base: 2019=100)

Mineral group and mineral	Weight	Jan – Mar 2024	Apr – Jun 2024	% change between Jan – Mar 2024 and Apr – Jun 2024	Contribution (% points) to the % change in total mining production
Gold	14,57	87,3	87,0	-0,3	0,0
Iron ore	12,99	97,8	86,0	-12,1	-1,6
Chromium ore	3,55	121,1	126,1	4,1	0,2
Copper ¹	0,66	89,4	98,1	9,7	0,1
Manganese ore	6,29	107,7	109,3	1,5	0,1
PGMs	26,05	92,8	96,1	3,6	0,9
Nickel ¹	1,11	62,7	71,4	13,9	0,1
Other metallic minerals ¹	2,48	84,6	86,9	2,7	0,1
Diamonds ¹	2,73	83,0	80,4	-3,1	-0,1
Coal	25,69	91,1	88,7	-2,6	-0,7
Building materials	3,15	89,4	89,3	-0,1	0,0
Other non-metallic minerals	0,73	92,0	101,3	10,1	0,1
Total	100,00	93,2	92,4	-0,9	-0,9

¹ Unadjusted. See notes 4, 5 and 6 on page 11.

Seasonally adjusted mining production decreased by 0,9% in the second quarter of 2024 compared with the first quarter of 2024. The largest negative contributors were iron ore (-12,1% and contributing -1,6 percentage points) and coal (-2,6% and contributing -0,7 of a percentage point), while PGMs (3,6% and contributing 0,9 of a percentage point) was the largest positive contributor – see Table B.

Figure 1 – Volume of mining production (Base: 2019=100)

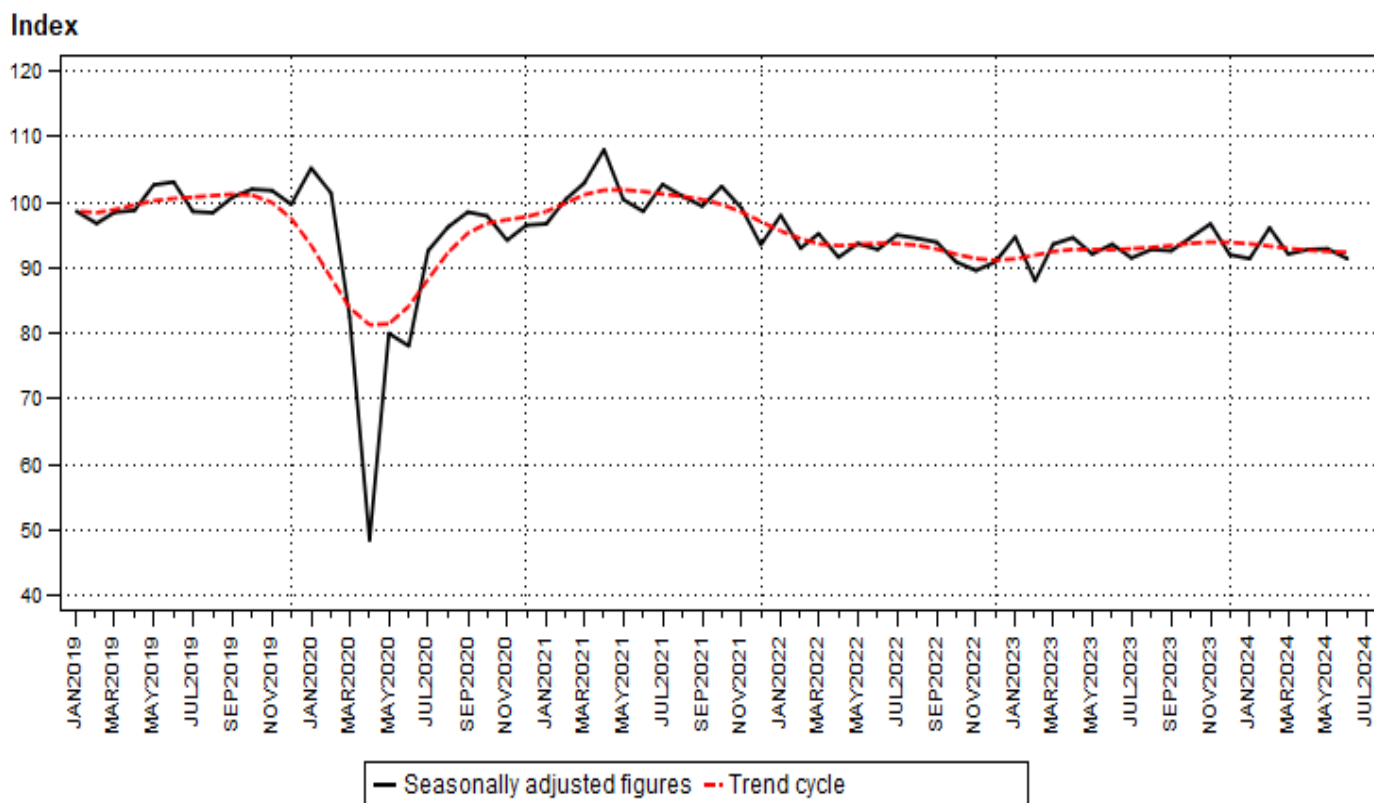
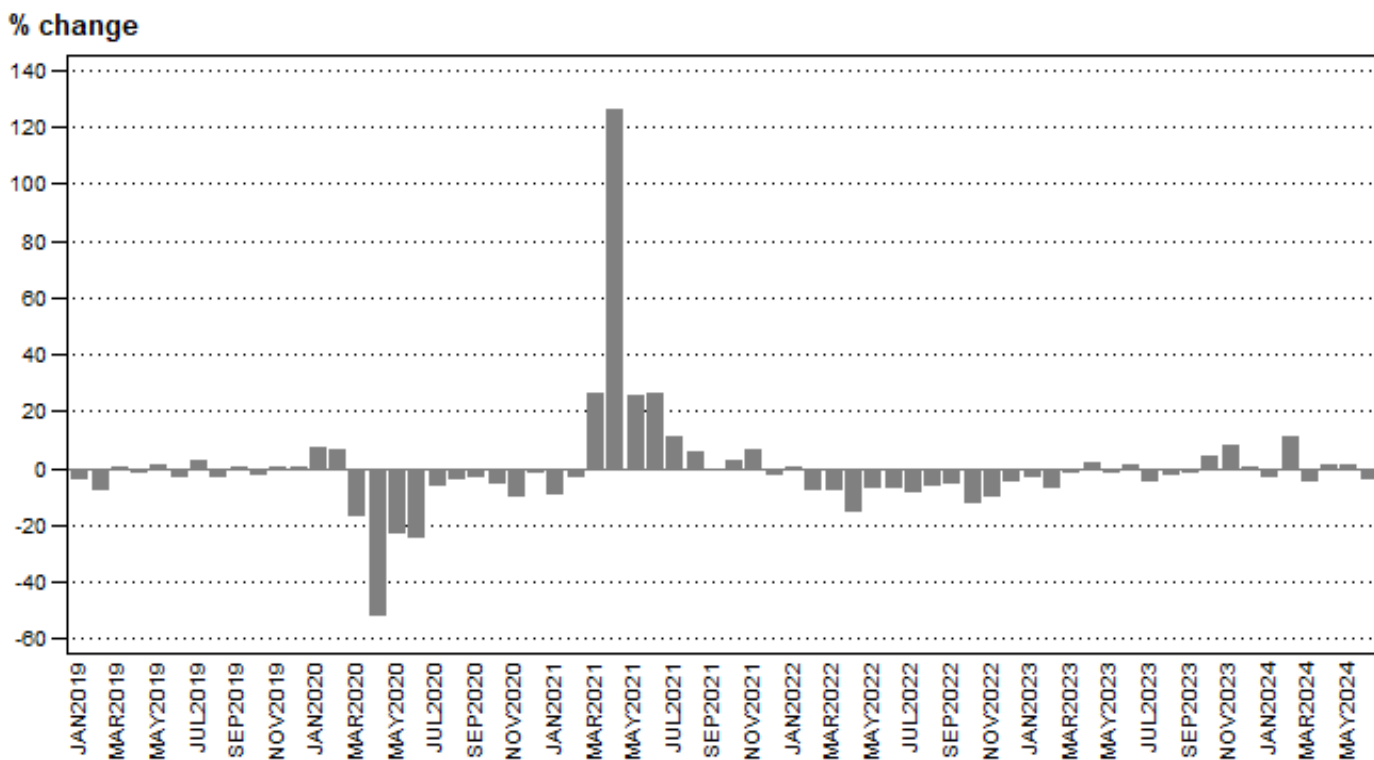


Figure 2 – Volume of mining production (Base: 2019=100): year-on-year percentage change



Sales: results for June 2024

Table C – Key growth rates in mineral sales at current prices

	Jan-24	Feb-24	Mar-24	Apr-24	May-24	Jun-24
Year-on-year % change, unadjusted	6,0	-2,5	-14,1	12,6	-18,6	18,2
Month-on-month % change, seasonally adjusted	-1,8	-7,7	-13,2	15,8	-7,3	21,8
3-month % change, seasonally adjusted ¹	10,9	4,3	-8,6	-12,0	-12,0	4,0

¹ Percentage change between the previous three months and the three months ending in the month indicated.

Mineral sales at current prices increased by 18,2% year-on-year in June 2024. The largest positive contributors were:

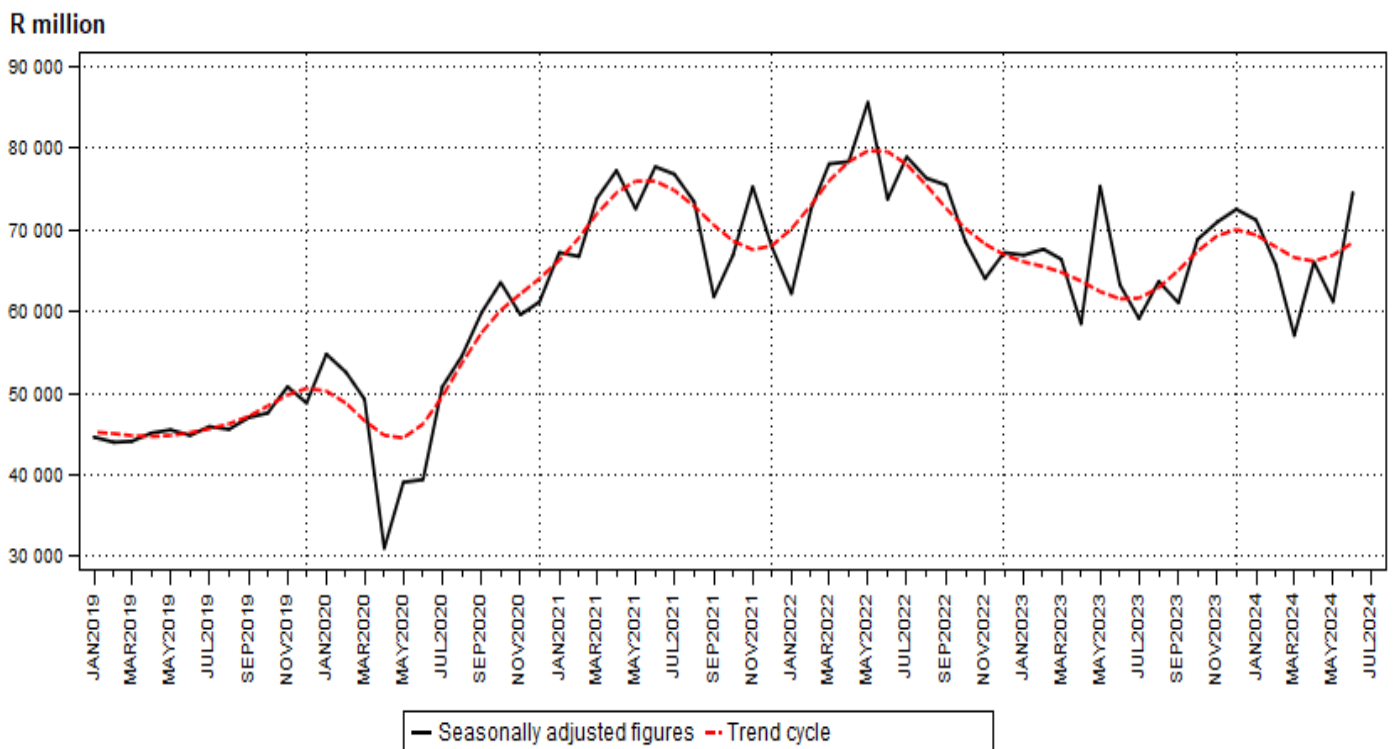
- gold (98,3% and contributing 14,8 percentage points);
- manganese ore (42,4% and contributing 2,8 percentage points); and
- coal (7,8% and contributing 1,9 percentage points).

PGMs (-8,4% and contributing -2,0 percentage points) and iron ore (-9,8% and contributing -1,1 percentage points) were the largest negative contributors – see Tables 12 and 13.

Seasonally adjusted mineral sales at current prices increased by 21,8% in June 2024 compared with May 2024. This followed month-on-month changes of -7,3% in May 2024 and 15,8% in April 2024.

Seasonally adjusted mineral sales at current prices increased by 4,0% in the second quarter of 2024 compared with the first quarter of 2024.

Figure 3 – Total value of mineral sales at current prices



Risenga Maluleke
Risenga Maluleke
Statistician-General

Tables

Table 1 – Index of the volume of mining production (Base: 2019=100)

Month	2018	2019	2020	2021	2022	2023	2024
Jan	89,2	86,3	92,6	84,8	85,4	83,0	81,0
Feb	90,1	83,5	88,8	86,4	80,4	75,4	84,0
Mar	99,2	99,3	83,2	105,0	97,5	96,1	92,1
Apr	93,4	93,1	45,1	101,9	87,0	88,7	89,9
May	104,7	106,3	82,7	103,6	97,1	96,0	97,2
Jun	113,2	110,3	84,3	106,5	99,4	100,5	97,0
Jul	99,2	101,9	95,9	106,6	98,4	94,6	
Aug	108,4	105,6	102,4	108,2	102,1	100,4	
Sep	104,9	105,5	102,5	102,5	97,2	95,8	
Oct	109,2	107,5	101,9	104,9	92,4	96,3	
Nov	105,5	106,0	96,4	102,7	93,1	100,3	
Dec	94,1	94,5	93,4	91,8	88,3	88,8	
Year	100,9	100,0	89,1	100,4	93,2	93,0	

Table 2 – Year-on-year percentage change in the volume of mining production

Month	2019	2020	2021	2022	2023	2024	2024 year-to-date
Jan	-3,3	7,3	-8,4	0,7	-2,8	-2,4	-2,4
Feb	-7,3	6,3	-2,7	-6,9	-6,2	11,4	4,2
Mar	0,1	-16,2	26,2	-7,1	-1,4	-4,2	1,0
Apr	-0,3	-51,6	125,9	-14,6	2,0	1,4	1,1
May	1,5	-22,2	25,3	-6,3	-1,1	1,3	1,1
Jun	-2,6	-23,6	26,3	-6,7	1,1	-3,5	0,3
Jul	2,7	-5,9	11,2	-7,7	-3,9		
Aug	-2,6	-3,0	5,7	-5,6	-1,7		
Sep	0,6	-2,8	0,0	-5,2	-1,4		
Oct	-1,6	-5,2	2,9	-11,9	4,2		
Nov	0,5	-9,1	6,5	-9,3	7,7		
Dec	0,4	-1,2	-1,7	-3,8	0,6		
Year	-0,9	-10,9	12,7	-7,2	-0,2		

Table 3 – Seasonally adjusted volume of total mining production

Month	Index (Base: 2019=100)				Month-on-month % change			
	2021	2022	2023	2024	2021	2022	2023	2024
Jan	96,7	98,0	94,7	91,4	0,2	4,8	4,2	-0,7
Feb	100,5	93,0	88,0	96,1	3,9	-5,1	-7,1	5,1
Mar	102,9	95,2	93,6	92,1	2,4	2,4	6,4	-4,2
Apr	108,0	91,6	94,6	92,8	5,0	-3,8	1,1	0,8
May	100,4	93,7	92,1	92,9	-7,0	2,3	-2,6	0,1
Jun	98,6	92,8	93,6	91,4	-1,8	-1,0	1,6	-1,6
Jul	102,7	95,0	91,5		4,2	2,4	-2,2	
Aug	100,9	94,5	92,8		-1,8	-0,5	1,4	
Sep	99,4	93,9	92,6		-1,5	-0,6	-0,2	
Oct	102,4	90,9	94,6		3,0	-3,2	2,2	
Nov	99,1	89,6	96,7		-3,2	-1,4	2,2	
Dec	93,5	90,9	92,0		-5,7	1,5	-4,9	

Table 4 – Index of the volume of mining production by mineral group and mineral (Base: 2019=100) ¹

Mineral group and mineral	Weight	Jan-24	Feb-24	Mar-24	Apr-24	May-24	Jun-24
Gold	14,57	69,5	78,5	91,0	84,7	86,6	85,0
Iron ore	12,99	95,4	98,3	86,4	81,3	90,3	93,9
Chromium ore	3,55	96,0	119,7	126,8	125,4	133,6	131,7
Copper	0,66	84,8	76,3	107,1	100,4	83,3	110,6
Manganese ore	6,29	83,0	102,3	113,7	88,5	133,9	133,0
PGMs	26,05	76,3	67,5	91,7	100,0	98,7	103,5
Nickel	1,11	62,3	53,4	72,4	70,9	72,4	70,8
Other metallic minerals	2,48	92,3	73,6	87,9	83,6	89,2	87,9
Diamonds	2,73	72,9	88,1	88,0	81,3	86,2	73,8
Coal	25,69	85,5	88,3	87,7	84,6	93,9	90,4
Building materials	3,15	63,6	89,9	89,7	88,4	99,7	88,8
Other non-metallic minerals	0,73	74,2	87,8	87,4	93,3	110,1	95,1
Total	100,00	81,0	84,0	92,1	89,9	97,2	97,0

¹ Annual averages and annual percentage changes are available on the following link: [Annual data](#).

Table 5 – Seasonally adjusted index of the volume of mining production by mineral group and mineral (Base: 2019=100)

Mineral group and mineral	Jan-24	Feb-24	Mar-24	Apr-24	May-24	Jun-24	Month-on-month % change
Gold	84,7	87,9	89,2	91,4	86,7	82,9	-4,4
Iron ore	97,9	109,9	85,7	84,8	88,9	84,3	-5,2
Chromium ore	113,2	126,6	123,5	125,9	127,2	125,3	-1,5
Copper ¹	84,8	76,3	107,1	100,4	83,3	110,6	32,8
Manganese ore	96,7	113,4	112,9	87,5	121,3	119,1	-1,8
PGMs	92,8	95,6	90,1	102,9	91,6	93,9	2,5
Nickel ¹	62,3	53,4	72,4	70,9	72,4	70,8	-2,2
Other metallic minerals ¹	92,3	73,6	87,9	83,6	89,2	87,9	-1,5
Diamonds ¹	72,9	88,1	88,0	81,3	86,2	73,8	-14,4
Coal	91,1	91,4	90,8	87,1	90,4	88,5	-2,1
Building materials	81,1	94,3	92,9	89,5	89,3	89,1	-0,2
Other non-metallic minerals	83,1	96,3	96,6	102,8	102,9	98,1	-4,7
Total	91,4	96,1	92,1	92,8	92,9	91,4	-1,6

¹ Unadjusted. See notes 4, 5 and 6 on page 11.

Table 6 – Year-on-year percentage change in the volume of mining production by mineral group and mineral

Mineral group and mineral	Jan-24	Feb-24	Mar-24	Apr-24	May-24	Jun-24
Gold	-12,6	-4,7	-4,3	-1,6	-9,0	-12,6
Iron ore	10,2	42,9	-7,0	-7,4	2,3	3,9
Chromium ore	4,9	21,9	15,6	20,9	20,7	13,3
Copper	21,3	61,3	4,3	-1,7	-12,1	35,2
Manganese ore	-24,4	1,7	-7,8	-21,0	12,4	5,2
PGMs	4,2	1,4	-2,4	16,7	-4,3	-5,8
Nickel	26,9	37,3	15,7	-3,5	-3,6	-4,2
Other metallic minerals	0,2	-11,5	-15,6	-22,3	-17,6	-21,3
Diamonds	-41,2	14,9	7,2	7,0	11,2	-8,1
Coal	2,6	17,6	-6,5	-2,0	7,6	-3,3
Building materials	-10,4	10,4	-10,5	2,0	2,0	-2,6
Other non-metallic minerals	-14,8	12,6	2,3	17,2	22,3	9,7
Total	-2,4	11,4	-4,2	1,4	1,3	-3,5

Table 7 – Contribution of each mineral group and mineral to the year-on-year percentage change in the volume of mining production (percentage points)

Mineral group and mineral	Jan-24	Feb-24	Mar-24	Apr-24	May-24	Jun-24
Gold	-1,8	-0,8	-0,6	-0,2	-1,3	-1,8
Iron ore	1,4	5,1	-0,9	-1,0	0,3	0,5
Chromium ore	0,2	1,0	0,6	0,9	0,8	0,5
Copper	0,1	0,3	0,0	0,0	-0,1	0,2
Manganese ore	-2,0	0,1	-0,6	-1,7	1,0	0,4
PGMs	1,0	0,3	-0,6	4,2	-1,2	-1,7
Nickel	0,2	0,2	0,1	0,0	0,0	0,0
Other metallic minerals	0,0	-0,3	-0,4	-0,7	-0,5	-0,6
Diamonds	-1,7	0,4	0,2	0,2	0,2	-0,2
Coal	0,7	4,5	-1,6	-0,5	1,8	-0,8
Building materials	-0,3	0,4	-0,3	0,1	0,1	-0,1
Other non-metallic minerals	-0,1	0,1	0,0	0,1	0,2	0,1
Total	-2,4	11,4	-4,2	1,4	1,3	-3,5

Table 8 – Mineral sales at current prices (R million)

Month	2018	2019	2020	2021	2022	2023	2024
Jan	34 420,4	41 070,7	51 128,5	63 518,6	59 103,7	63 488,0	67 302,5
Feb	34 892,7	38 202,9	45 135,2	56 927,3	61 749,7	57 535,4	56 105,7
Mar	39 778,5	45 585,3	51 606,4	78 213,1	83 612,9	71 435,0	61 381,6
Apr	37 039,5	44 538,7	31 064,5	78 533,6	80 336,2	60 038,4	67 612,8
May	41 684,6	46 519,8	40 521,7	75 976,9	89 865,3	79 410,6	64 651,9
Jun	45 024,3	48 295,2	41 962,5	82 049,6	77 707,8	66 591,2	78 693,9
Jul	37 118,1	43 596,0	48 588,4	73 935,4	76 336,4	57 321,2	
Aug	43 022,2	47 069,2	56 868,0	77 095,1	80 535,0	67 441,9	
Sep	43 017,4	50 009,3	63 394,0	65 086,8	78 776,1	63 294,6	
Oct	45 802,3	50 051,2	66 165,3	69 099,3	70 271,1	70 020,5	
Nov	46 680,3	50 450,7	58 255,9	72 147,3	60 806,5	67 096,2	
Dec	50 020,5	47 491,9	58 501,2	64 696,9	64 441,8	70 193,3	
Total	498 500,8	552 880,9	613 191,6	857 279,9	883 542,5	793 866,3	

Table 9 – Year-on-year percentage change in mineral sales at current prices

Month	2019	2020	2021	2022	2023	2024	2024 year-to-date
Jan	19,3	24,5	24,2	-7,0	7,4	6,0	6,0
Feb	9,5	18,1	26,1	8,5	-6,8	-2,5	2,0
Mar	14,6	13,2	51,6	6,9	-14,6	-14,1	-4,0
Apr	20,2	-30,3	152,8	2,3	-25,3	12,6	0,0
May	11,6	-12,9	87,5	18,3	-11,6	-18,6	-4,5
Jun	7,3	-13,1	95,5	-5,3	-14,3	18,2	-0,7
Jul	17,5	11,5	52,2	3,2	-24,9		
Aug	9,4	20,8	35,6	4,5	-16,3		
Sep	16,3	26,8	2,7	21,0	-19,7		
Oct	9,3	32,2	4,4	1,7	-0,4		
Nov	8,1	15,5	23,8	-15,7	10,3		
Dec	-5,1	23,2	10,6	-0,4	8,9		
Total	10,9	10,9	39,8	3,1	-10,1		

Table 10 – Seasonally adjusted total mineral sales at current prices

Month	R million				Month-on-month % change			
	2021	2022	2023	2024	2021	2022	2023	2024
Jan	67 240,7	62 211,4	66 922,3	71 225,5	9,9	-8,4	-0,5	-1,8
Feb	66 759,5	72 642,1	67 648,5	65 746,4	-0,7	16,8	1,1	-7,7
Mar	73 837,7	78 099,7	66 413,4	57 067,8	10,6	7,5	-1,8	-13,2
Apr	77 284,1	78 372,8	58 499,9	66 063,7	4,7	0,3	-11,9	15,8
May	72 592,0	85 650,4	75 362,2	61 210,7	-6,1	9,3	28,8	-7,3
Jun	77 745,8	73 773,8	63 303,1	74 545,1	7,1	-13,9	-16,0	21,8
Jul	76 830,2	78 971,1	59 152,8		-1,2	7,0	-6,6	
Aug	73 468,5	76 349,7	63 702,5		-4,4	-3,3	7,7	
Sep	61 820,3	75 498,7	61 084,3		-15,9	-1,1	-4,1	
Oct	66 914,5	68 648,7	68 832,4		8,2	-9,1	12,7	
Nov	75 294,7	64 053,4	70 975,7		12,5	-6,7	3,1	
Dec	67 941,4	67 227,5	72 540,8		-9,8	5,0	2,2	

Table 11 – Mineral sales at current prices by mineral group and mineral (R million)

Mineral group and mineral	Jan-24	Feb-24	Mar-24	Apr-24	May-24	Jun-24
Gold	18 388,3	5 969,2	8 858,7	11 010,3	4 865,3	19 891,3
Iron ore	8 932,0	9 380,3	7 181,1	9 251,5	8 121,8	6 923,9
Chromium ore	4 266,9	5 124,4	5 142,2	5 537,6	5 704,5	5 974,5
Copper	541,9	544,6	378,3	513,2	531,0	830,3
Manganese ore	2 837,6	3 044,4	3 863,2	3 340,1	4 407,2	6 288,6
PGMs	11 993,7	11 328,2	13 571,5	15 837,1	17 086,3	14 868,2
Nickel	586,9	786,6	494,0	907,8	658,7	1 234,3
Other metallic minerals	1 840,9	1 524,1	2 065,1	2 179,7	1 943,1	1 832,8
Coal	14 723,3	14 601,3	16 347,5	15 593,9	17 400,3	17 400,4
Building materials	890,6	1 121,0	1 102,8	1 105,3	1 214,8	1 108,3
Other non-metallic minerals	2 300,4	2 681,6	2 377,3	2 336,4	2 718,9	2 341,4
Total	67 302,5	56 105,7	61 381,6	67 612,8	64 651,9	78 693,9

Table 12 – Year-on-year percentage change in mineral sales at current prices by mineral group and mineral

Mineral group and mineral	Jan-24	Feb-24	Mar-24	Apr-24	May-24	Jun-24
Gold	113,3	25,0	29,6	226,5	-69,2	98,3
Iron ore	8,0	20,5	-26,8	9,1	-0,4	-9,8
Chromium ore	11,7	22,5	6,3	17,0	28,3	18,3
Copper	-1,9	151,9	-22,3	6,6	-15,6	67,4
Manganese ore	-15,1	-25,2	-20,8	-3,4	-9,8	42,4
PGMs	-25,3	-29,5	-29,4	-7,3	-22,9	-8,4
Nickel	-29,4	-2,3	-37,4	-0,6	-34,4	27,0
Other metallic minerals	-31,8	-1,3	-18,5	7,2	-14,5	-11,8
Coal	-11,5	-3,8	-3,2	-7,4	11,7	7,8
Building materials	2,8	18,7	-6,7	1,7	0,8	-2,0
Other non-metallic minerals	29,4	36,8	-40,3	49,8	-17,2	-1,5
Total	6,0	-2,5	-14,1	12,6	-18,6	18,2

Table 13 – Contribution of each mineral group and mineral to the year-on-year percentage change in mineral sales at current prices (percentage points)

Mineral group and mineral	Jan-24	Feb-24	Mar-24	Apr-24	May-24	Jun-24
Gold	15,4	2,1	2,8	12,7	-13,7	14,8
Iron ore	1,0	2,8	-3,7	1,3	0,0	-1,1
Chromium ore	0,7	1,6	0,4	1,3	1,6	1,4
Copper	0,0	0,6	-0,2	0,1	-0,1	0,5
Manganese ore	-0,8	-1,8	-1,4	-0,2	-0,6	2,8
PGMs	-6,4	-8,2	-7,9	-2,1	-6,4	-2,0
Nickel	-0,4	0,0	-0,4	0,0	-0,4	0,4
Other metallic minerals	-1,4	0,0	-0,7	0,2	-0,4	-0,4
Coal	-3,0	-1,0	-0,8	-2,1	2,3	1,9
Building materials	0,0	0,3	-0,1	0,0	0,0	0,0
Other non-metallic minerals	0,8	1,3	-2,2	1,3	-0,7	-0,1
Total	6,0	-2,5	-14,1	12,6	-18,6	18,2

Explanatory notes

- Introduction**
 - 1 Statistics South Africa (Stats SA) publishes monthly mining production indices and mineral sales based on the information furnished by the Department of Mineral Resources and Energy (DMRE). Data in this release are presented by mineral group and mineral.
 - 2 In accordance with international practice, the indices are usually re-based every five years to a new base year. The current base year of the index of the volume of mining production is 2019=100. Both actual and seasonally adjusted figures are presented.
 - 3 The value of mineral sales is calculated, in general, on a free-on-rail/free-on-board basis.
- Purpose of the survey**
 - 4 The monthly mining production and sales survey is conducted by the DMRE, covering all mining establishments operating in the South African economy. The results of this survey are used to calculate the volume of mining production indices in order to estimate the gross domestic product (GDP) and its components, which in turn are used to develop and monitor government policy.
- Scope of the survey**
 - 5 This survey covers mining establishments conducting activities regarding the extracting, dressing and beneficiating of minerals occurring naturally, for example solids such as coal and ores.
- Classification**
 - 6 The 1993 edition of the *Standard Industrial Classification of All Economic Activities* (SIC), Fifth Edition, Report No. 09-90-02, was used to classify the statistical units in the survey. The SIC is based on the 1990 *International Standard Industrial Classification of All Economic Activities* (ISIC) with suitable adaptations for local conditions. Each statistical unit is classified to an industry which reflects the predominant activity of the establishment. Statistics in this publication are presented by mineral group and mineral.
- Statistical unit**
 - 7 The statistical unit for the collection of information is the mining establishment. An establishment is the smallest economic unit that functions as a separate entity.
- Revised figures**
 - 8 Revised figures are mainly due to late submission of data to the DMRE, or the DMRE reporting revisions or corrections to their figures. The reasons for routine revisions are outlined in the following schedule. Any unscheduled revisions will be promptly indicated in relevant tables to maintain transparency and accuracy. It is important to note that seasonally adjusted figures are revised monthly.

Statistical release	Reason for revision	Period subject to revision
Jun-24	Additional information from the DMRE	Jan-22 - May-24
Jul-24	Additional information from the DMRE	Jan-22 - Jun-24
Aug-24	Additional information from the DMRE	Jan-22 - Jul-24
Sep-24	Additional information from the DMRE New weights for mining production	Jan-21 - Aug-24
Oct-24	Additional information from the DMRE	Jan-22 - Sep-24
Nov-24	Additional information from the DMRE	Jan-22 - Oct-24
Dec-24	Additional information from the DMRE	Jan-22 - Nov-24
Jan-25	Additional information from the DMRE	Jan-22 - Dec-24
Feb-25	Additional information from the DMRE	Jan-23 - Jan-25
Mar-25	Additional information from the DMRE	Jan-23 - Feb-25
Apr-25	Additional information from the DMRE	Jan-23 - Mar-25
May-25	Additional information from the DMRE	Jan-23 - Apr-25
New base year in 2027/28 - periodic, approximately four- to five-year intervals		

- Rounding-off of figures**
 - 9 The figures in the tables have, where necessary, been rounded off to the nearest digit shown. There may, therefore, be slight discrepancies between the sums of the constituent items and the totals shown.

Historical data and past publications	10	Historical mining data and past publications are available on the Stats SA website. Click on the following link (Time series data) or (Past publications) to access the data and releases electronically. Annual averages and annual percentage changes are available on the following link: Annual data .
Technical notes		
Index of the volume of mining production	1	The index of the volume of mining production, also known as the production index, is a statistical measure of the change in the volume of production. The production index of a mineral group is the ratio between the volume of production of a mineral group in a given period and the volume of production of the same mineral group in the base period. The current base period is 2019. The production in the base period is set at 100.
Index weighting	2	The weight of a mineral group is the ratio of its value added to the total value added of the mining industry. The weight of a mineral group reflects the importance of the mineral group in the total mining industry. The weights change over time due to quality improvements and changes in relative prices. New weights will be calculated annually.
	3	The weights, which are used to aggregate minerals to mineral groups and mineral groups to total mining, are derived from national accounts value added data. The latest weights (implemented in the September 2023 publication) are based on an average of value added data for the years 2018, 2019 and 2020. These weights are applicable from January 2020.
Seasonal adjustment	4	Seasonally adjusted estimates are generated each month using the X-12-ARIMA Seasonal Adjustment Program developed by the United States Census Bureau. Seasonal adjustment is a means of removing the estimated effects of normal seasonal variation from the series so that the effects of other influences on the series can be recognised more clearly. Seasonal adjustment does not aim to remove irregular or non-seasonal influences which may be present in any particular month.
	5	Influences that are volatile or unsystematic can still make it difficult to interpret the movement of the series even after adjustment for seasonal variations. This means the month-to-month movements of seasonally adjusted estimates may not be reliable indicators of trend behaviour. The X-12-ARIMA procedure for mining production and sales is described in more detail on the Stats SA website at: Click to download seasonal adjustment for mining production and sales February 2022 .
Calendar effects	6	These are effects due to calendar variations. Such calendar effects include the number of working/trading days in a week, moving holidays such as Easter and the length of month (some months have more days than others).
Trend cycle	7	The trend is the long-term pattern or movement of a time series. The X-12-ARIMA Seasonal Adjustment Program is used for smoothing seasonally adjusted estimates to estimate the underlying trend cycle.
Month-on-month percentage change	8	The month-on-month percentage change in a variable for any given month is the change between that month and the previous month, expressed as a percentage of the latter.
Year-on-year percentage change	9	The year-on-year percentage change in a variable for any given period is the change between that period and the corresponding period of the previous year, expressed as a percentage of the latter.
Index contribution (percentage points)	10	The contribution (percentage points) of a mineral group or mineral to the percentage change in the total mining production for a given period is calculated by multiplying the difference in the index for each mineral group or mineral by the weight of the mineral group or mineral and then dividing by the previous period's total index.

- Sales contribution (percentage points)** 11 The contribution (percentage points) to the percentage change in total sales for a given period is calculated by multiplying the percentage change of each mineral group or mineral with its percentage contribution to total mineral sales of the previous period, divided by 100.

Glossary

Free-on-rail Free-on-rail relates to goods sold on the local market where no rail or road transport costs are involved.

Free-on-board Free-on-board relates to goods destined for the export market. Rail, road transport and docking charges are involved but no charges are made for transport by sea.

Industry An industry consists of a group of establishments engaged in the same or similar kinds of economic activity. Industries are defined in the *System of National Accounts (SNA)* in the same way as in the *Standard Industrial Classification of All Economic Activities (SIC)*, Fifth Edition of January 1993.

PGMs – Platinum group metals Platinum group metals include platinum, iridium, osmiridium, palladium, rhodium, ruthenium and osmium.

Sales Sales are the total value of sales of primary minerals at the first point of saleability by the mining establishment.

Symbols and abbreviations

DMRE	Department of Mineral Resources and Energy
GDP	Gross domestic product
ISIC	International Standard Industrial Classification
PGMs	Platinum group metals
SIC	Standard Industrial Classification of All Economic Activities
SNA	System of National Accounts
Stats SA	Statistics South Africa
*	Revised

Technical enquiries

JP Terblanche Telephone number: (012) 310 2965
Email: juan-pierret@statssa.gov.za

Mpuleng Galane Telephone number: (012) 444 3735
Email: mpuleng.galane@dmre.gov.za

General information

Stats SA publishes approximately 300 different statistical releases each year. It is not economically viable to produce them in more than one of South Africa's 12 official languages. Since the releases are used extensively locally and by international economic and social-scientific communities, Stats SA releases are published in English only.

Stats SA has copyright on this publication. Users may apply the information as they wish, provided that they acknowledge Stats SA as the source of the basic data wherever they process, apply, utilise, publish or distribute the data and also that they specify that the relevant application and analysis (where applicable) result from their own processing of the data.

Advance release calendar

An advance release calendar is disseminated on www.statssa.gov.za.

Stats SA products

A complete set of Stats SA publications is available at the Stats SA Library and the following libraries:

National Library of South Africa, Pretoria Division
National Library of South Africa, Cape Town Division
Natal Society Library, Pietermaritzburg
Library of Parliament, Cape Town
Bloemfontein Public Library
Johannesburg Public Library
Eastern Cape Library Services, Qonce
Central Regional Library, Polokwane
Central Reference Library, Mbombela
Central Reference Collection, Kimberley
Central Reference Library, Mmabatho

Stats SA also provides a subscription service.

Electronic services

A large range of data is available via online services. For more details about our electronic services, contact Stats SA's user information service.

You can visit us on the internet at: www.statssa.gov.za.

General enquiries

User information services	Telephone number: (012) 310 8600 Email: info@statssa.gov.za
Orders/subscription services	Telephone number: (012) 310 8619 Email: millies@statssa.gov.za
Postal address	Private Bag X44, Pretoria, 0001

Produced by Stats SA