

Colombo Consumer Price Index (CCPI)-(BASE 2021=100) November 2024

29-11-2024

Department of Census and Statistics

Ministry of Finance, Planning and Economic Development

The Department of Census and Statistics (DCS) is the authorized agency to compile Colombo Consumer Price Index (CCPI). Following internationally accepted guidelines, it has been arranged to revise the base year from 2013=100 to 2021=100 in order to accommodate the changing expenditure patterns and in cooperate changes of goods & services available in the market. Accordingly, with respect to the new base, CCPI (Base 2021=100) will be released monthly commencing from February 2023 on the last working day of each month. It is emphasized that index numbers or inflation figures compiled under different base years cannot be compared.

The CCPI is compiled to indicate average changes in the prices of goods and services purchased by households in urban areas of Colombo district. The price collection of the index (Base 2021=100) has covered 10 price collection centers in Peliyagoda, Maradana, Wellawatta, Dematagoda Grandpass, Kirulapone, Nugegoda, Rathmalana, and two Dedicated Economic Centers namely Narahenpita and Rathmalana.

Prices are collected weekly from the outlets located within each of the above market areas including Sathosa and a supermarket. The consumer basket includes 426 items, which represent the typical urban household consumption expenditure. The CPI weights are derived from the Household Income and Expenditure Survey (HIES) 2019.

- 📄 The CCPI for all items for the month of November 2024 was 189.4 and it records a decrease of 0.5 index points compared to October 2024, for which the index was 189.9.
- 📄 The overall rate of inflation as measured by CCPI on Y-on-Y basis is -2.1% in November 2024

Content

- 01. Variations in Colombo Consumer Price Index (Page 1)
- 02. Inflation:(Page 5)

[🔗 Source Publication](#) For more details on the revision of base year, please click here: [Technical Note on Base Year Revision](#)

1. Variations in Colombo Consumer Price Index

Month on month changes in the Colombo Consumer Price Index is briefly described below.

Major Group*	Monthly Changes of the						Monthly Changes		
	Index Number			Expenditure Values (Rs.)			of the Index (%) ¹		
	Nov. 2023	Oct. 2024	Nov. 2024	Nov. 2023	Oct. 2024	Nov. 2024	Nov. 2023	Oct. 2024	Nov. 2024
All Items	193.4	189.9	189.4	1865.90	-933.09	-427.75	1.06	-0.53	-0.25
Food and Non Alcoholic Beverages	230.3	231.9	231.7	202.83	-351.49	-34.81	0.12	-0.20	-0.02
Non Food	180.2	174.9	174.3	1663.07	-581.60	-392.94	0.95	-0.33	-0.23
Alcoholic beverages									
Tobacco and Narcotic	206.0	255.3	244.0	-30.69	-5.24	-174.10	-0.02	0.00	-0.10
Clothing and Footwear	242.5	244.8	246.8	6.33	27.41	39.74	0.00	0.02	0.02
Housing, Water, Electricity, Gas and Other Fuels	154.8	134.5	134.5	1744.96	-19.95	17.94	0.99	-0.01	0.01
Furnishing Household Equipment and Routine Household Maintenance	182.3	188.0	185.0	26.60	-6.89	-97.69	0.02	0.00	-0.06
Health	171.0	180.2	181.5	-96.73	0.00	44.85	-0.06	0.00	0.03
Transport	230.3	226.7	224.9	-60.68	-496.49	-207.45	-0.03	-0.28	-0.12
Restaurant and Hotels	232.9	238.8	238.4	109.41	-81.35	-16.27	0.06	-0.05	-0.01
Other	161.7	170.9	170.9	-36.12	0.93	0.04	-0.02	0.00	0.00

Note 1 : There are 12 main groups of the market basket. Significant changes in November 2024 were noted in eight groups, details on which are given in Table 2.

Note 2: Monthly change of the index (%) is calculated using expenditure values.

Note 3:¹ Percentage of items does not tally with overall percentage due to rounding off.

1.1 Month on Month (M on M) Change of CCPI:

The CCPI for all items for the month of November 2024 was 189.4 and it records a decrease of 0.5 index points or 0.25 percentage compared to the month of October 2024 for which the index was 189.9. This represents a decrease in expenditure value by Rs 427.75 in the "Market Basket".

1.1.1 Contribution to M on M Changes:

Contributions to the change in CCPI from October 2024 to November 2024 are given in Table 02. The month-on-month change was contributed by decreases in Food items by 0.02% and Non Food items by 0.23% respectively.

1.1.2 Contribution of Food and Non-Alcoholic Beverages items: -0.02%

As shown in table 02, decreases in value change were reported for Fresh Fruits (0.30%), Fresh Fish (0.07%), Milk Powder (0.04%), Eggs (0.02%), Green gram (0.01%), Beef (0.01%), Potatoes (0.01%), Jack (0.01%) and Sugar (0.01%).

While increases in value change were reported for Coconuts (0.20%), Limes (0.06%), Vegetables (0.05%), Big Onions (0.05%), Rice (0.03%), Coconut Oil (0.03%), Dhal Mysoor (0.02%), Red Onions (0.02%), Green Chillies (0.02%) and Tamarind (0.01%).

1.1.3 Contribution of Non-Food items: -0.23%

Among Non-Food groups, decreases in value change were reported for the groups of 'Transport' (0.12%), 'Alcoholic beverages Tobacco and Narcotic' (0.10%), 'Furnishing Household Equipment and Routine Household Maintenance' (0.06%) and 'Restaurant and Hotels' (0.01%).

While increases in value change were reported for the groups of 'Health' (0.03%) 'Clothing and Footwear' (0.02%) and 'Housing, Water, Electricity, Gas and Other Fuels' (0.01%).

Further, insignificant value change was reported in group of 'Miscellaneous Goods and Services' and Meanwhile, the price indices of 'Education', 'Communication' and 'Recreation and Culture' groups remained unchanged during the month.

Table 02: Contribution to the change in CCPI from October 2024 to November 2024
(Base2021=100)

	Rs.Cts.	Value Change		Net effect
		Increase	Decrease	
Food	-34.81	0.49	0.51	-0.02
1 RICE	46.32	0.03		
<i>Rice - (Kekulu white)</i>	23.71	0.01		
<i>Rice - (Kekulu - red)</i>	17.38	0.01		
<i>Rice - (Samba)</i>	12.12	0.01		
2 Green gram	-24.69		0.01	
3 Beef	-10.17		0.01	
4 Fresh Fish	-120.10		0.07	
5 Milk powder	-68.44		0.04	
6 Eggs	-28.90		0.02	
7 Coconuts	351.22	0.20		
8 Coconut oil	47.34	0.03		
9 Fresh Fruits	-525.53		0.30	
<i>Banana</i>	-209.61		0.12	
<i>Papaw</i>	-160.77		0.09	
<i>Mangoes</i>	-160.33		0.09	
10 Vegetables	88.42	0.05		
11 Potatoes	-24.10		0.01	
12 Jak	-9.33		0.01	
13 Dhal Mysoor	26.39	0.02		
14 Red onions	30.26	0.02		
15 Big onions	81.81	0.05		
16 Green chilies	42.79	0.02		
17 Sugar	-22.00		0.01	
18 Limes	108.07	0.06		
19 Tamarind	24.66	0.01		
20 Others	-48.82		0.03	

Non Food		-392.94	0.06	0.28	-0.23
21	Alcoholic beverages Tobacco and Narcotic	-174.10		0.10	
	<i>Areca nuts</i>	<i>-178.19</i>		<i>0.10</i>	
22	Clothing and Footwear	39.74	0.02		
23	Housing, Water, Electricity, Gas and Other Fuels	17.94	0.01		
24	Furnishing Household Equipment and Routine Household Maintenance	-97.69		0.06	
	<i>Refrigerators</i>	<i>-18.45</i>		<i>0.01</i>	
	<i>Washing powder</i>	<i>-48.61</i>		<i>0.03</i>	
	<i>Detergents/ Disinfectants</i>	<i>-25.55</i>		<i>0.01</i>	
25	Health	44.85	0.03		
	<i>Purchase of medical/ pharmacy products</i>	<i>36.55</i>	<i>0.02</i>		
26	Transport	-207.45		0.12	
	<i>Petrol</i>	<i>-136.48</i>		<i>0.08</i>	
	<i>Diesel</i>	<i>-20.84</i>		<i>0.01</i>	
	<i>bus fare</i>	<i>-23.25</i>		<i>0.01</i>	
	<i>Three-wheeler Charges</i>	<i>-30.33</i>		<i>0.02</i>	
27	Restaurant and Hotels	-16.27		0.01	
28	Others	0.04	0.00		
All Items		-427.75	0.54	0.79	-0.25

*Percentages of items do not tally with overall percentage due to rounding off.

2. Inflation

The CCPI is an economic indicator constructed to measure inflation which is defined as percentage change in CCPI over the year. There are two measures of inflation in general use. One measure is Year on Year base or Point to Point inflation (The percentage change in the CPI during the last 12 months). The other measure is Moving Average Inflation (The percentage difference between the average Price Index of last 12 months & the average Price Index of previous 12 months).

Table 03: Movements of the CCPI (Base: 2021=100)

Year	Month	All Item				Food				Non Food			
		Index Number	% Change Month on Month	Inflation %		Index Number	% Change Month on Month	Inflation %		Index Number	% Change Month on Month	Inflation %	
				Y on Y	12 Month Moving Avg.			Y on Y	12 Month Moving Avg.			Y on Y	12 Month Moving Avg.
2023	November	193.4	1.0	3.4		230.3	0.3	-3.6		180.2	1.3	6.8	
	December	195.1	0.9	4.0	17.4	238.9	3.7	0.3	12.1	179.5	-0.4	5.8	20.0
2024	January	200.7	2.9	6.4	14.2	247.9	3.8	3.3	8.5	183.9	2.5	7.9	17.1
	February	200.6	0.0	5.9	11.3	242.8	-2.1	3.5	5.4	185.6	0.9	7.0	14.2
	March	196.7	-1.9	0.9	8.0	237.8	-2.1	3.8	2.9	182.1	-1.9	-0.5	10.5
	April	195.2	-0.8	1.5	5.7	235.4	-1.0	2.9	1.2	180.9	-0.7	0.9	7.9
	May	194.1	-0.6	0.9	3.9	232.6	-1.2	0.0	-0.3	180.3	-0.3	1.3	6.0
	June	195.6	0.8	1.7	3.1	239.1	2.8	1.4	-0.5	180.1	-0.1	1.8	4.9
	July	194.7	-0.5	2.4	2.8	239.4	0.1	1.5	-0.2	178.8	-0.7	2.8	4.3
	August	191.1	-1.8	0.5	2.5	234.6	-2.0	0.8	0.2	175.6	-1.8	0.4	3.6
	September	190.9	-0.1	-0.5	2.4	233.3	-0.6	-0.3	0.7	175.8	0.1	-0.5	3.2
	October	189.9	-0.5	-0.8	2.2	231.9	-0.6	1.0	1.2	174.9	-0.5	-1.6	2.6
	November	189.4	-0.3	-2.1	1.7	231.7	-0.1	0.6	1.6	174.3	-0.3	-3.3	1.8

Note: Year on Year inflation, 12 Month Moving Average inflation and Month on Month change were calculated using the rounding off index numbers

2.1 Year on Year (Y-on-Y) Inflation

The overall rate of inflation as measured by the CCPI on Y-on-Y basis is -2.1% in November 2024 and Y-on-Y inflation calculated for the month of October 2024 was -0.8% (Table 3). The Y-on-Y inflation of Food Group decreased to 0.6% in November 2024 from 1.0% in October 2024 and the Y-on-Y inflation of Non Food Group decreased to -3.3% in November 2024 from -1.6% in October 2024.

2.2 Contribution to Y on Y inflation:

For the month of November 2024, on Y-on-Y basis, contribution to inflation by food commodities was 0.19%.

The contribution of Non Food items was -2.25%. This was mainly due to price decreases in the groups of 'Housing, Water, Electricity, Gas and Other Fuels' (3.31%) and 'Transport' (0.35%). However, price increases in groups of items were reported 'Alcoholic beverages Tobacco and Narcotics' (0.33%), 'Education' (0.31%), 'Health' (0.22%), 'Miscellaneous Goods and Services' (0.15%), 'Restaurants and Hotels' (0.15%), 'Recreation and Culture' (0.11%), 'Communication' (0.07%), 'Furnishing Household Equipment and Routine Household Maintenance' (0.05%) and 'Clothing and Footwear' (0.05%) when compared to the month of November 2023.

Table 04: Contribution to the increase in CCPI from November 2023 November 2024
(Base 2021=100)

Sub Group/Commodity	Value Change Rs.Cts.	Increase %	Decrease %	Net effect %
Food and Non Alcoholic Beverages	336.19	1.01	0.60	0.19
Rice	349.48	0.20		
Wheat flour	-32.22		0.02	
Bread (Normal)	-137.44		0.08	
Chicken	-130.76		0.07	
Eggs	-116.97		0.07	
Sea Fish	536.47	0.30		
Coconuts	902.39	0.51		
Coconut oil	239.03	0.13		
Fresh Fruits	-388.70		0.22	
Vegetable	-408.19		0.23	
Potatoes	25.25	0.01		
Big Onions	208.31	0.12		
Sugar	-151.97		0.09	
Chili powder	-124.39		0.07	
Dried chilies	-185.45		0.10	
Tea dust/ leaves	73.15	0.04		
Non Food	-3998.68	1.42	3.67	-2.25
Alcoholic beverages Tobacco and Narcotic	583.06	0.33		
<i>Arrack</i>	<i>121.24</i>	<i>0.07</i>		
<i>Whiskey</i>	<i>84.37</i>	<i>0.05</i>		
<i>Beer</i>	<i>20.75</i>	<i>0.01</i>		
<i>Cigarettes</i>	<i>181.08</i>	<i>0.10</i>		
<i>Areca nuts</i>	<i>120.06</i>	<i>0.07</i>		
Clothing and Footwear	86.04	0.05		
Housing, Water, Electricity, Gas and Other				
Fuels	-5887.02		3.31	
<i>Water bills</i>	<i>-184.46</i>		<i>0.10</i>	
<i>Electricity bill</i>	<i>-6103.90</i>		<i>3.44</i>	
<i>L. P. Gas</i>	<i>23.30</i>	<i>0.01</i>		
<i>Kerosene oil</i>	<i>-84.05</i>		<i>0.05</i>	
Furnishing Household Equipment and Routine				
Household Maintenance	86.60	0.05		
Health	385.31	0.22		
<i>Fees to private medical practices</i>	<i>233.06</i>	<i>0.13</i>		
<i>Consultation fees to specialists</i>	<i>37.58</i>	<i>0.02</i>		
Transport	-628.09		0.35	
<i>Petrol</i>	<i>-1102.35</i>		<i>0.62</i>	
<i>Diesel</i>	<i>-221.83</i>		<i>0.12</i>	
<i>Vehicle maintenance expenses (Repair charges)</i>	<i>402.78</i>	<i>0.23</i>		
<i>bus fare</i>	<i>-187.93</i>		<i>0.11</i>	
Communication	115.51	0.07		
Recreation and Culture	187.85	0.11		
Education	548.50	0.31		
Restaurant and hotels	260.43	0.15		
Miscellaneous Goods and Services	263.15	0.15		
All Items	-3662.48	2.43	4.27	-2.06

*Percentages of items do not tally with overall percentage due to rounding off.

Movements in the CCPI (Base 2021=100) for Head Line, Food, Non Food and Year on Year Inflation

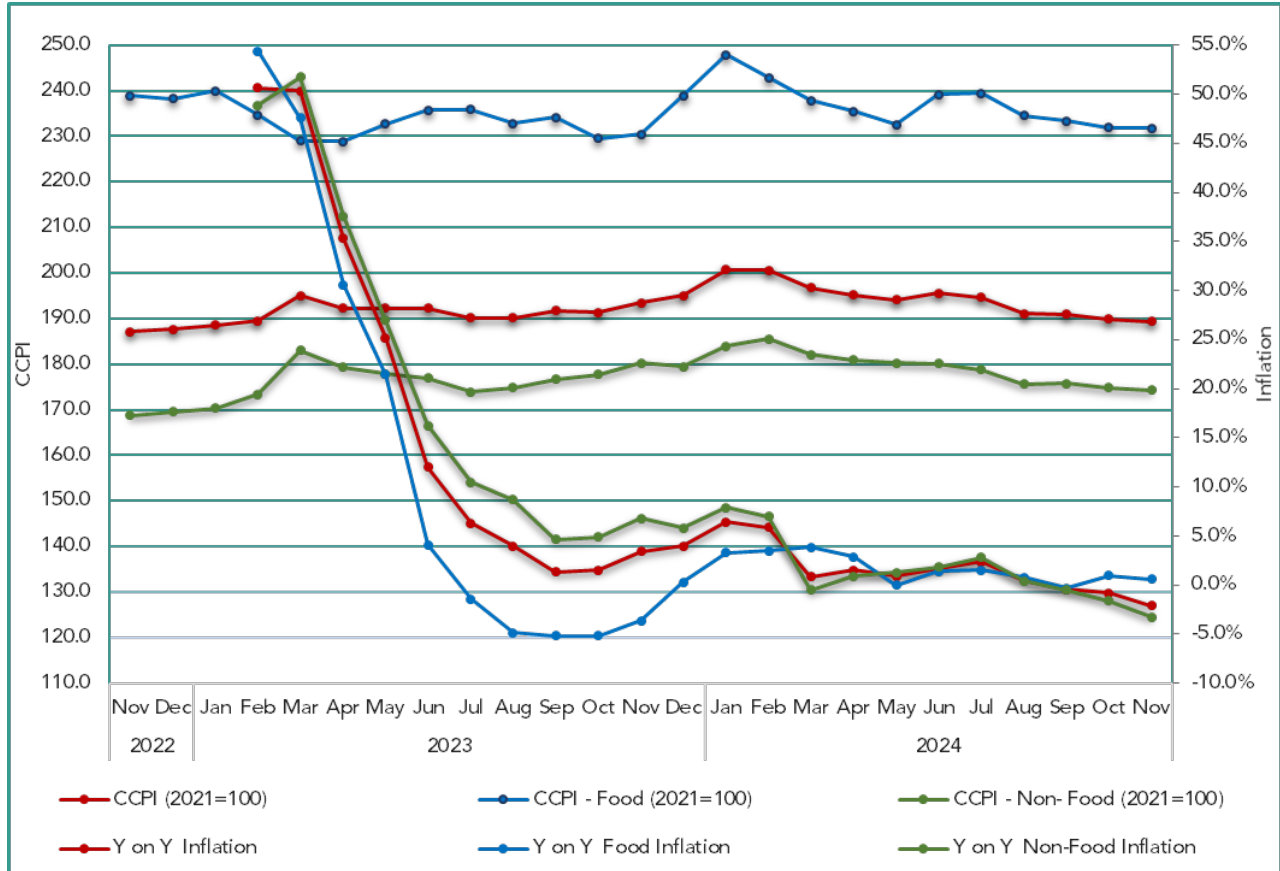


Table 05: Monthly average open market retail prices of selected items of Colombo Consumer Price Index November 2023, October & November 2024


Item	Unit	Retail Prices (Rs. Cts)			Retail Price Changes (%)	
		2023 Nov.	2024 Oct.	2024 Nov.	Nov. 24/ Nov. 23	Nov. 24 / Oct. 24
1. Rice- Kekulu – Red	Kg	196.24	216.13	218.73	11.46	1.20
2. Rice- Kekulu – White	Kg	209.24	217.15	220.60	5.43	1.59
3. Rice –Nadu - White	Kg	218.10	227.11	229.71	5.32	1.14
4. Rice –Nadu - Red	Kg	218.72	231.78	233.21	6.62	0.62
5. Rice- Samba	Kg	237.38	268.41	267.39	12.64	-0.38
6. Cowpea	Kg	1108.58	908.92	872.59	-21.29	-4.00
7.Green Grams	Kg	981.29	948.17	863.05	-12.05	-8.98
8. Coconut	Each	104.77	130.41	146.74	40.05	12.52
9. Coconut Oil	750ml	441.38	526.33	547.31	24.00	3.99
10.Chicken	Kg	1152.74	1092.88	1095.80	-4.94	0.27
11. Eggs	Each	43.78	39.26	37.77	-13.72	-3.78
12. Red Onion	Kg	536.15	437.47	476.64	-11.10	8.95
13. Big Onion	Kg	279.53	315.34	338.50	21.09	7.34
14. Potatoes	Kg	279.27	302.34	291.08	4.23	-3.73
15. Garlic	Kg	668.32	636.10	647.97	-3.04	1.87
16. Dried Chilies	Kg	1298.41	921.60	905.45	-30.26	-1.75
17. Green Chilies	Kg	747.47	513.06	589.80	-21.09	14.96
18. Sugar	Kg	296.42	261.29	255.34	-13.86	-2.28
19. Pepper	Kg	2777.31	2825.67	2788.17	0.39	-1.33
Vegetables-						
20. Ash Plantain	Kg	367.03	298.88	265.27	-27.72	-11.25
21. Carrot	Kg	386.34	263.33	227.31	-41.16	-13.68
22. Snake Gourd	Kg	451.54	372.69	410.41	-9.11	10.12
23. Tomatoes	Kg	357.14	354.94	373.28	4.52	5.17
24. Capsicum	Kg	696.29	739.96	728.91	4.68	-1.49
25. Beetroot	Kg	319.66	279.46	283.13	-11.43	1.31
26. Beans	Kg	630.65	422.44	486.14	-22.92	15.08
Fruits						
27. Banana	Kg	339.03	314.80	266.65	-21.35	-15.30
28. Papaw	Kg	212.68	256.96	185.47	-12.79	-27.82
29. Mangoes	Each	154.16	291.91	166.20	7.82	-43.06
Fresh Fish –						
30. Seer	Kg	2873.92	3237.16	2978.17	3.63	-8.00
31.Talapath	Kg	2473.64	2741.87	2747.22	11.06	0.20
32.Paraw	Kg	2069.31	2337.19	2345.56	13.35	0.36
Dried Fish -						
33.Katta	Kg	2224.43	2145.33	2121.29	-4.64	-1.12
34. Sprats	Kg	1324.24	1323.95	1305.33	-1.43	-1.41
Fuel -						
35. Kerosene Oil	Lt	247.25	188.43	183.00	-25.99	-2.88
36 .Petrol (CPC & IOC)	Lt	358.25	317.00	311.00	-13.19	-1.89
37. Diesel (CPC & IOC)	Lt	354.75	289.86	283.00	-20.23	-2.37
38. Gas- Avg.	12.5kg	3652.19	3687.50	3687.50	0.97	0.00
	Litro	12.5kg	3541.25	3690.00	0.04	0.00
	Laughs	12.5kg	3985.00	3680.00	-0.08	0.00





The Vision of DCS

“To be the leader in the region in producing timely statistical information to achieve the country’s development goals.”

The Mission of DCS

“Making contribution in the socioeconomic development of the country by providing accurate timely statistics, more Effectively by means of new technology, and utilising the services of dedicated staff under a strategic leadership to become a prosperous nation in the globalised environment.”

 Department of Census & Statistics,
Sankyana Mandiraya
No. 306/71, Polduwa
Road, Battaramulla

 info@statistics.gov.lk
 +94 11 2147000
 +94 11 2147011
 statistics.gov.lk

This publication is produced by the Prices and Wages Division

 5th floor, Department of Census and Statistics
 prices@statistics.gov.lk
 +94 11 2147414  +94 11 2877945