
Colombo Consumer Price Index (CCPI)-(BASE 2021=100)

December 2024

31-12-2024

Department of Census and Statistics

Ministry of Finance, Planning and Economic Development

The Department of Census and Statistics (DCS) is the authorized agency to compile Colombo Consumer Price Index (CCPI). Following internationally accepted guidelines, it has been arranged to revise the base year from 2013=100 to 2021=100 in order to accommodate the changing expenditure patterns and in cooperate changes of goods & services available in the market. Accordingly, with respect to the new base, CCPI (Base 2021=100) will be released monthly commencing from February 2023 on the last working day of each month. It is emphasized that index numbers or inflation figures compiled under different base years cannot be compared.

The CCPI is compiled to indicate average changes in the prices of goods and services purchased by households in urban areas of Colombo district. The price collection of the index (Base 2021=100) has covered 10 price collection centers in Peliyagoda, Maradana, Wellawatta, Dematagoda Grandpass, Kirulapone, Nugegoda, Rathmalana, and two Dedicated Economic Centers namely Narahenpita and Rathmalana.

Prices are collected weekly from the outlets located within each of the above market areas including Sathosa and a supermarket. The consumer basket includes 426 items, which represent the typical urban household consumption expenditure. The CPI weights are derived from the Household Income and Expenditure Survey (HIES) 2019.

- 📄 The CCPI for all items for the month of December 2024 was 191.7 and it records an increase of 2.3 index points compared to November 2024, for which the index was 189.4.
- 📄 The overall rate of inflation as measured by CCPI on Y-on-Y basis is -1.7% in December 2024

Content

- 01. Variations in Colombo Consumer Price Index (Page 1)
- 02. Inflation:(Page 5)

[🔗 Source Publication](#) For more details on the revision of base year, please click here: [Technical Note on Base Year Revision](#)

1. Variations in Colombo Consumer Price Index

Month on month changes in the Colombo Consumer Price Index is briefly described below.

Table 1- Monthly Changes by main Groups of Market Basket

Major Group*	Index Number			Monthly Changes of the Expenditure Values (Rs.)			Monthly Changes of the Index (%) ¹		
	Dec.	Nov.	Dec.	Dec.	Nov.	Dec.	Dec.	Nov.	Dec.
	2023	2024	2024	2023	2024	2024	2023	2024	2024
All Items	195.1	189.4	191.7	1574.25	-427.75	2067.93	0.89	-0.25	1.19
Food and Non Alcoholic Beverages	238.9	231.7	240.7	2062.02	-34.81	2166.31	1.16	-0.02	1.24
Non Food	179.5	174.3	174.2	-487.78	-392.94	-98.38	-0.27	-0.23	-0.06
Alcoholic beverages Tobacco and Narcotic	204.1	244.0	235.0	-29.67	-174.10	-137.56	-0.02	-0.10	-0.08
Clothing and Footwear	236.6	246.8	247.6	-118.99	39.74	17.29	-0.07	0.02	0.01
Housing, Water, Electricity, Gas and Other Fuels	154.6	134.5	135.1	-61.77	17.94	151.75	-0.03	0.01	0.09
Furnishing Household Equipment and Routine Household Maintenance	182.6	185.0	183.4	10.55	-97.69	-49.78	0.01	-0.06	-0.03
Transport	227.6	224.9	224.6	-308.38	-207.45	-25.81	-0.17	-0.12	-0.01
Recreation and Culture	173.5	182.9	181.0	17.38	0.00	-35.81	0.01	0.00	-0.02
Miscellaneous Goods and Services	185.9	194.9	194.3	-2.88	0.04	-18.45	0.00	0.00	-0.01
Other	179.4	187.6	187.6	5.98	28.58	0.00	0.00	0.02	0.00

Note 1 : There are 12 main groups of the market basket. Significant changes in December 2024 were noted in eight groups, details on which are given in Table2.

Note 2: Monthly change of the index (%) is calculated using expenditure values.

Note 3: ¹ Percentage of items does not tally with overall percentage due to rounding off.

1.1 Month on Month (M on M) Change of CCPI:

The CCPI for all items for the month of December 2024 was 191.7 and it records an increase of 2.3 index points or 1.19 percentage compared to the month of November 2024 for which the index was 189.4. This represents an increase in expenditure value by Rs 2067.93 in the "Market Basket".

1.1.1 Contribution to M on M Changes:

Contributions to the change in CCPI from November 2024 to December 2024 are given in Table 02. The month-on-month change was contributed to by an increases in Food items by 1.24% and a decrease in Non Food items by 0.06%, respectively.

1.1.2 Contribution of Food and Non-Alcoholic Beverages items: 1.24%

As shown in table 02, increases in value change were reported for Vegetables (0.41%), Coconuts (0.27%), Rice (0.16%), Green chilies (0.10%), Fresh Fish (0.10%), Beef (0.07%), Potatoes (0.05%), Fresh Fruits (0.04%), Canned Fish (0.02%), Eggs (0.02%), Coconut oil (0.02%), Garlic (0.02%), Tamarind (0.02%), Red Onions (0.01%) and Curry leaves (0.01%).

While decreases in value change were reported for Limes (0.03%), Dried Fish (0.02%), Milk Powder (0.02%), Green gram (0.01%), Big Onions (0.01%) and Pepper (0.01%)

1.1.3 Contribution of Non-Food items: -0.06%

Among Non-Food groups, decreases in value change were reported for the groups of 'Alcoholic beverages Tobacco and Narcotic' (0.08%), 'Furnishing Household Equipment and Routine Household Maintenance' (0.03%), 'Recreation and Culture' (0.02%), 'Transport' (0.01%) and 'Miscellaneous Goods and Services' (0.01%).

While increases in value change were reported for the groups of 'Housing, Water, Electricity, Gas and Other Fuels' (0.09%) and 'Clothing and Footwear' (0.01%).

Meanwhile, the price indices of 'Education', 'Communication' and 'Restaurant and Hotels' groups remained unchanged during the month.

Table 02: Contribution to the change in CCPI from November 2024 to December 2024 (Base2021=100)

	Rs.Cts.	Value Change		
		Increase	Decrease	Net effect
Food	2166.31	1.33	0.09	1.24
1 RICE	274.75	0.16		
<i>Rice - (Kekulu white)</i>	100.41	0.06		
<i>Rice - (Kekulu - red)</i>	84.33	0.05		
<i>Rice - (Samba)</i>	35.32	0.02		
<i>Rice - (Nadu-White)</i>	43.78	0.03		
<i>Rice - (Nadu-Red)</i>	10.91	0.01		
2 Green gram	-14.61		0.01	
3 Beef	116.27	0.07		
4 Fresh Fish	168.94	0.10		
5 Dried Fish	-33.07		0.02	
<i>Sprats (dry)</i>	-37.58		0.02	
<i>Keerameen (dry)</i>	12.21	0.01		
6 Canned fish	36.20	0.02		
7 Milk powder	-40.04		0.02	
8 Eggs	30.45	0.02		
9 Coconuts	476.46	0.27		
10 Coconut oil	37.24	0.02		
11 Fresh Fruits	69.83	0.04		
<i>Banana</i>	-86.13		0.05	
<i>Papaw</i>	159.74	0.09		
12 Vegetables	715.71	0.41		
13 Potatoes	83.67	0.05		
14 Red onions	14.19	0.01		

15	Big onions	-8.82		0.01	
16	Garlic	31.97	0.02		
17	Green chilies	178.58	0.10		
18	Pepper	-10.57		0.01	
19	Limes	-44.28		0.03	
20	Curry leaves	8.93	0.01		
21	Tamarind	30.38	0.02		
22	Others	44.14	0.03		
	Non Food	-98.38	0.10	0.15	-0.06
23	Alcoholic beverages Tobacco and Narcotic	-137.56		0.08	
	<i>Beetle leaves</i>	<i>-16.56</i>		<i>0.01</i>	
	<i>Areca nuts</i>	<i>-120.17</i>		<i>0.07</i>	
24	Clothing and Footwear	17.29	0.01		
25	Housing, Water, Electricity, Gas and Other Fuels	151.75	0.09		
	<i>Maintenance/ Reconstruction</i>	<i>146.61</i>	<i>0.08</i>		
26	Furnishing Household Equipment and Routine Household Maintenance	-49.78		0.03	
	<i>Refrigerators</i>	<i>-19.11</i>		<i>0.01</i>	
	<i>Washing powder</i>	<i>-13.45</i>		<i>0.01</i>	
27	Transport	-25.81		0.01	
	<i>Petrol</i>	<i>-35.75</i>		<i>0.02</i>	
28	Recreation and Culture	-35.81		0.02	
	<i>Past paper Books</i>	<i>-27.30</i>		<i>0.02</i>	
	<i>Exercise books and stationeries.</i>	<i>-18.26</i>		<i>0.01</i>	
29	Miscellaneous Goods and Services	-18.45		0.01	
	<i>Shaving goods and creams</i>	<i>-20.95</i>		<i>0.01</i>	
	All Items	2067.93	1.43	0.24	1.19

*Percentages of items do not tally with overall percentage due to rounding off.

2. Inflation

The CCPI is an economic indicator constructed to measure inflation which is defined as percentage change in CCPI over the year. There are two measures of inflation in general use. One measure is Year on Year base or Point to Point inflation (The percentage change in the CPI during the last 12 months). The other measure is Moving Average Inflation (The percentage difference between the average Price Index of last 12 months & the average Price Index of previous 12 months).

Table 03: Movements of the CCPI (Base: 2021=100)

Year	Month	All Item				Food				Non Food			
		Index Number	% Change Month on Month	Inflation %		Index Number	% Change Month on Month	Inflation %		Index Number	% Change Month on Month	Inflation %	
				Y on Y	12 Month Moving Avg.			Y on Y	12 Month Moving Avg.			Y on Y	12 Month Moving Avg.
2023	December	195.1	0.9	4.0	17.4	238.9	3.7	0.3	12.1	179.5	-0.4	5.8	20.0
2024	January	200.7	2.9	6.4	14.2	247.9	3.8	3.3	8.5	183.9	2.5	7.9	17.1
	February	200.6	0.0	5.9	11.3	242.8	-2.1	3.5	5.4	185.6	0.9	7.0	14.2
	March	196.7	-1.9	0.9	8.0	237.8	-2.1	3.8	2.9	182.1	-1.9	-0.5	10.5
	April	195.2	-0.8	1.5	5.7	235.4	-1.0	2.9	1.2	180.9	-0.7	0.9	7.9
	May	194.1	-0.6	0.9	3.9	232.6	-1.2	0.0	-0.3	180.3	-0.3	1.3	6.0
	June	195.6	0.8	1.7	3.1	239.1	2.8	1.4	-0.5	180.1	-0.1	1.8	4.9
	July	194.7	-0.5	2.4	2.8	239.4	0.1	1.5	-0.2	178.8	-0.7	2.8	4.3
	August	191.1	-1.8	0.5	2.5	234.6	-2.0	0.8	0.2	175.6	-1.8	0.4	3.6
	September	190.9	-0.1	-0.5	2.4	233.3	-0.6	-0.3	0.7	175.8	0.1	-0.5	3.2
	October	189.9	-0.5	-0.8	2.2	231.9	-0.6	1.0	1.2	174.9	-0.5	-1.6	2.6
	November	189.4	-0.3	-2.1	1.7	231.7	-0.1	0.6	1.6	174.3	-0.3	-3.3	1.8
	December	191.7	1.2	-1.7	1.2	240.7	3.9	0.8	1.6	174.2	-0.1	-3.0	1.1

Note: Year on Year inflation, 12 Month Moving Average inflation and Month on Month change were calculated using the rounding off index numbers

2.1 Year on Year (Y-on-Y) Inflation

The overall rate of inflation as measured by the CCPI on Y-on-Y basis is -1.7% in December 2024 and Y-on-Y inflation calculated for the month of November 2024 was -2.1% (Table 3). The Y-on-Y inflation of Food Group increased to 0.8% in December 2024 from 0.6% in November 2024 and the Y-on-Y inflation of Non Food Group increased to -3.0% in December 2024 from -3.3% in November 2024.

2.2 Contribution to Y on Y inflation:

For the month of December 2024, on Y-on-Y basis, contribution to inflation by food commodities was 0.25%.

The contribution of Non Food items was -2.01%. This was mainly due to price decreases in the groups of 'Housing, Water, Electricity, Gas and Other Fuels' (3.16%) and 'Transport' (0.19%). However, price increases in groups of items were reported 'Education' (0.31%), 'Alcoholic beverages Tobacco and Narcotics' (0.27%), 'Health' (0.21%), 'Miscellaneous Goods and Services' (0.14%), 'Restaurants and Hotels' (0.14%), 'Clothing and Footwear' (0.12%), 'Recreation and Culture' (0.08%), 'Communication' (0.06%) and 'Furnishing Household Equipment and Routine Household Maintenance' (0.01%) when compared to the month of December 2023.

Table 04: Contribution to the increase in CCPI from December 2023 December 2024

(Base 2021=100)				
Sub Group/Commodity	Value Change Rs.Cts.	Increase %	Decrease %	Net effect %
Food and Non Alcoholic Beverages	440.48	1.36	1.01	0.25
Rice	566.41	0.32		
Wheat flour	-32.98		0.02	
Bread (Normal)	-137.44		0.08	
Chicken	-132.52		0.07	
Sea fish	212.68	0.12		
Eggs	-235.58		0.13	
Coconuts	1230.55	0.69		
Coconut oil	261.45	0.15		
Fresh Fruits	-250.92		0.14	
Vegetable	-395.58		0.22	
Potatoes	74.17	0.04		
Big Onions	-100.20		0.06	
Sugar	-211.04		0.12	
Chili powder	-133.67		0.07	
Dried chillies	-179.34		0.10	
Tea dust/ leaves	87.41	0.05		
Non Food	-3609.28	1.34	3.36	-2.01
Alcoholic beverages Tobacco and Narcotic	475.17	0.27		
<i>Arrack</i>	121.24	0.07		
<i>Whiskey</i>	84.37	0.05		
<i>Beer</i>	20.75	0.01		
<i>Cigarettes</i>	181.08	0.10		
<i>Areca nuts</i>	15.07	0.01		
Clothing and Foot Wear	222.32	0.12		
Housing, Water, Electricity, Gas and Other Fuels	-5673.49		3.16	
<i>Water bills</i>	-184.46		0.10	
<i>Electricity bill</i>	-6103.90		3.41	
<i>L. P. Gas</i>	11.54	0.01		
<i>Kerosene oil</i>	-78.95		0.04	
Furnishing Household Equipment and Routine Household Maintenance	26.26	0.01		
Health	385.36	0.21		
<i>Fees to private medical practices</i>	233.08	0.13		
<i>Consultation fees to specialists</i>	37.58	0.02		
Transport	-345.52		0.19	
<i>Petrol</i>	-891.11		0.50	
<i>Diesel</i>	-147.88		0.08	
<i>Vehicle maintenance expenses (Repair charges)</i>	402.78	0.22		
<i>bus fare</i>	-187.93		0.10	
Communication	115.51	0.06		
Recreation and Culture	134.65	0.08		
Education	548.50	0.31		
Restaurant and hotels	254.40	0.14		
Miscellaneous Goods and Services	247.58	0.14		
<i>Car Insurance</i>	174.56	0.10		
All Items	-3168.80	2.70	4.37	-1.77

*Percentages of items do not tally with overall percentage due to rounding off.

Movements in the CCPI (Base 2021=100) for Head Line, Food, Non Food and Year on Year Inflation

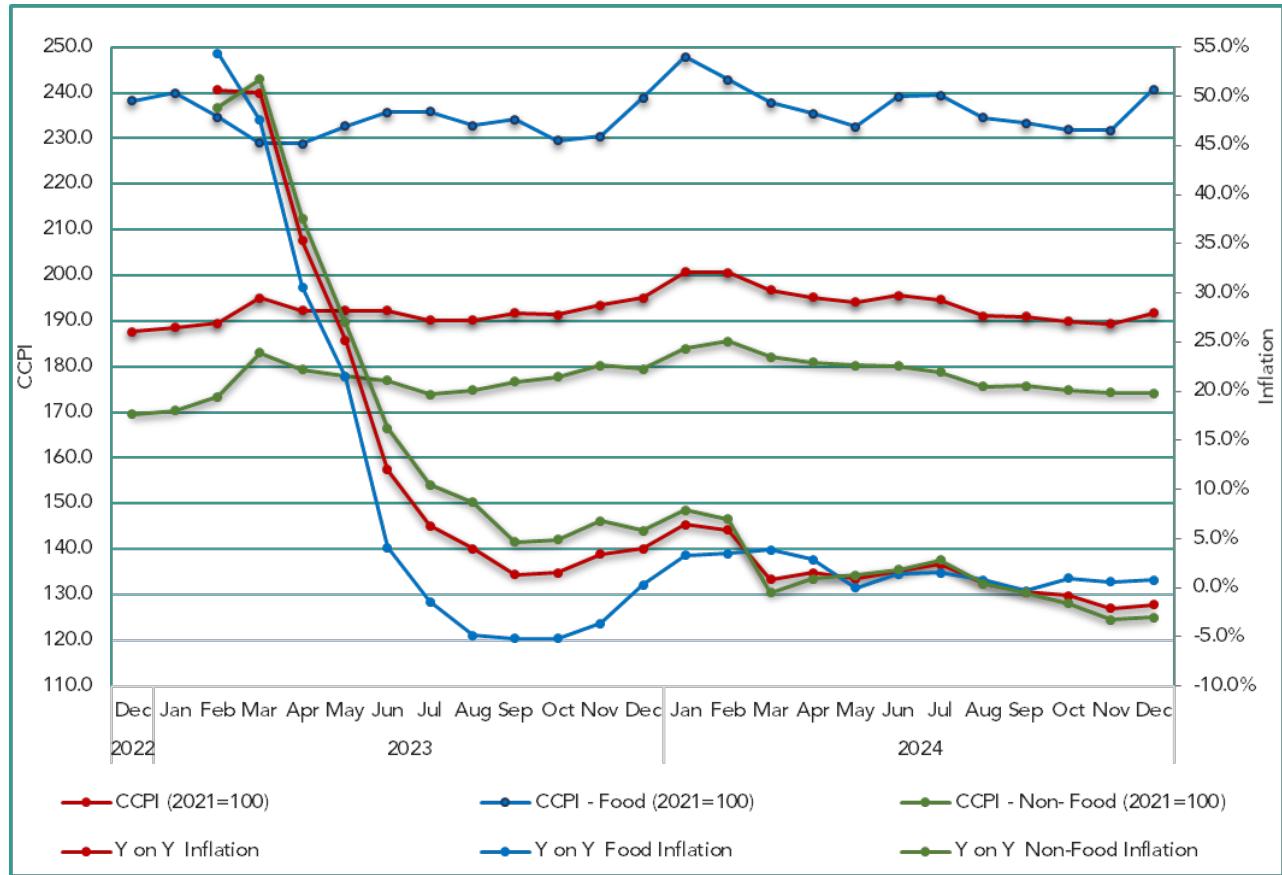


Table 05: Monthly average open market retail prices of selected items of Colombo Consumer Price Index December 2023, November & December 2024


Item	Unit	Retail Prices (Rs. Cts)			Retail Price Changes (%)	
		2023 Dec.	2024 Nov.	2024 Dec.	Dec. 24/ Dec. 23	Dec. 24 / Nov. 24
1. Rice– Kekulu – Red	Kg	201.05	218.73	231.36	15.08	5.77
2. Rice– Kekulu – White	Kg	211.40	220.60	235.19	11.25	6.61
3. Rice –Nadu - White	Kg	219.74	229.71	239.10	8.81	4.09
4. Rice –Nadu - Red	Kg	222.05	233.21	244.67	10.19	4.91
5. Rice– Samba	Kg	237.38	267.39	271.76	14.48	1.63
6. Cowpea	Kg	1168.37	872.59	870.96	-25.45	-0.19
7.Green Grams	Kg	980.86	863.05	812.70	-17.14	-5.83
8. Coconut	Each	111.67	146.74	168.90	51.24	15.10
9. Coconut Oil	750ml	447.94	547.31	563.81	25.87	3.02
10.Chicken	Kg	1204.14	1095.80	1146.43	-4.79	4.62
11. Eggs	Each	51.43	37.77	39.34	-23.52	4.14
12. Red Onion	Kg	582.07	476.64	495.01	-14.96	3.85
13. Big Onion	Kg	364.36	338.50	336.00	-7.78	-0.74
14. Potatoes	Kg	295.52	291.08	330.20	11.73	13.44
15. Garlic	Kg	649.77	647.97	704.38	8.40	8.71
16. Dried Chilies	Kg	1285.94	905.45	905.92	-29.55	0.05
17. Green Chilies	Kg	1318.08	589.80	910.05	-30.96	54.30
18. Sugar	Kg	314.32	255.34	257.27	-18.15	0.76
19. Pepper	Kg	2808.59	2788.17	2730.19	-2.79	-2.08
Vegetables-						
20. Ash Plantain	Kg	424.96	265.27	274.39	-35.43	3.44
21. Carrot	Kg	475.78	227.31	300.12	-36.92	32.03
22. Snake Gourd	Kg	446.44	410.41	472.99	5.95	15.25
23. Tomatoes	Kg	662.34	373.28	455.13	-31.29	21.93
24. Capsicum	Kg	804.40	728.91	899.78	11.86	23.44
25. Beetroot	Kg	569.93	283.13	432.21	-24.16	52.66
26. Beans	Kg	672.64	486.14	732.96	8.97	50.77
Fruits						
27. Banana	Kg	326.65	266.65	247.40	-24.26	-7.22
28. Papaw	Kg	207.12	185.47	256.50	23.84	38.30
29. Mangoes	Each	114.66	166.20	120.05	4.70	-27.77
Fresh Fish –						
30. Seer	Kg	3268.94	2978.17	3041.94	-6.94	2.14
31.Talapath	Kg	2625.93	2747.22	2753.42	4.86	0.23
32.Paraw	Kg	2301.96	2345.56	2332.54	1.33	-0.56
Dried Fish -						
33.Katta	Kg	2215.09	2121.29	2103.96	-5.02	-0.82
34. Sprats	Kg	1309.20	1305.33	1235.95	-5.59	-5.32
Fuel -						
35. Kerosene Oil	Lt	247.29	183.00	186.93	-24.41	2.15
36. Petrol (CPC & IOC)	Lt	347.43	311.00	309.43	-10.94	-0.51
37. Diesel (CPC & IOC)	Lt	332.86	283.00	285.36	-14.27	0.83
38. Gas- Avg.	12.5kg	3670.00	3687.50	3687.50	0.00	0.00
	Litro	12.5kg	3565.00	3690.00	3.51	0.00
	Laughs	12.5kg	3985.00	3680.00	-7.65	0.00





The Vision of DCS





“To be the leader in the region in producing timely statistical information to achieve the country’s development goals.”

The Mission of DCS

“Making contribution in the socioeconomic development of the country by providing accurate timely statistics, more Effectively by means of new technology, and utilising the services of dedicated staff under a strategic leadership to become a prosperous nation in the globalised environment.”

 Department of Census & Statistics,
Sankyana Mandiraya
No. 306/71, Polduwa
Road, Battaramulla

 info@statistics.gov.lk
 +94 11 2147000
 +94 11 2147011
 statistics.gov.lk

This publication is produced by the Prices and Wages
Division
 5th floor, Department of Census and Statistics
 prices@statistics.gov.lk
 +94 11 2147414  +94 11 2877945