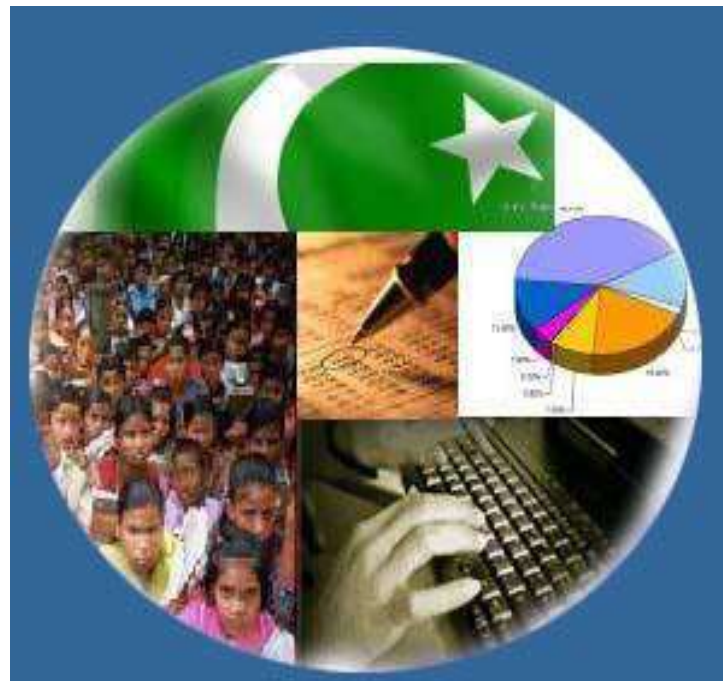




Monthly Review on Price Indices



November 2024
(Base Year 2015-16)

Government of Pakistan
Ministry of Planning, Development & Special Initiatives
Pakistan Bureau of Statistics
Islamabad

PRICE STATISTICS TEAM

S#	Name	Designation
1.	Dr. Naeem Uz Zafar (S.I)	Chief Statistician
2.	Dr. Bahrawar Jan	Deputy Director General
3.	Mr. Naseer Ahmad	Director
4.	Dr. Ahtasham Gul	Chief Statistical Officer
5.	Mr. Adnan Shams	Statistical Officer
6.	Mr. Kashif Ali	Statistical Officer
7.	Miss. Umaira Zareen	Statistical Officer
8.	Mr. Abdul Qadir	Statistical Officer
9.	Mrs. Safia Akram	Statistical Officer
10.	Mrs. Faiza Razzaq	Statistical Officer
12.	Mr. Umer Farooq	Statistical Assistant
13.	Mr. Ansar Mahmood	Statistical Assistant
14.	Mrs. Madiha Gulfraz	Statistical Assistant
15.	Mrs. Humail Fatima	Statistical Assistant
16.	Mr. Muhammad Asif	Statistical Assistant

IT & SOFTWARE TEAM

1.	Mr. Muhammad Sarwar Gondal (S.I)	Member (Support Services)
2.	Mr. Muhammad Ehtesham	Director (DP)
3.	Mrs. Sobia Munawar	Director (DP)
4.	Mr. Arsalan Bashir	Data Processing Officer
5.	Mr. Muhammad Kibria	Data Processing Officer

Inflation in Brief

- CPI inflation General**, decreased to 4.9% on year-on-year basis in November 2024 as compared to 7.2% in the previous month and 29.2% in November 2023. On month-on-month basis, it increased by 0.5% in November 2024 as compared to an increase of 1.2% in the previous month and an increase of 2.7% in November 2023.
- CPI inflation Urban**, decreased to 5.2% on year-on-year basis in November 2024 as compared to the 9.3% in the previous month and 30.4% in November 2023. On month-on-month basis, it increased by 0.5% in November 2024 as compared to an increase of 1.1% in the previous month and an increase of 4.3% in November 2023.
- CPI inflation Rural**, increased by 4.3% on year-on-year basis in November 2024 as compared to 4.2% in the previous month and 27.5% in November 2023. On month-on-month basis, it increased by 0.5% in November 2024 as compared to an increase of 1.5% in the previous month and an increase of 0.4% in November 2023.
- SPI inflation** on YoY decreased to 7.3% in November 2024 as compared to 9.7% a month earlier and 30.6% in November 2023. On MoM basis, it increased by 1.0% in November 2024 as compared to an increase of 0.6% a month earlier and an increase of 3.3% in November 2023.
- WPI inflation** on YoY basis decreased to 2.3% in November 2024 as compared to 3.9% a month earlier and an increase of 26.4% in November 2023. On MoM basis, it decreased by 0.1% in November 2024 as compared to a no change in the previous month and an increase of 1.4% in corresponding month of last year i.e. November 2023.
- Figures 1 and 2 show graphically the yearly data of Table 1.a for Urban and Rural CPI while Table 1.1 shows "Period Average" and "YoY" percentage changes in indices of three years.

Table 1.a General Inflation (%) (Base 2015-16)																		
PERIOD	CPI														SPI**		WPI	
	General						Food				Non-Food							
	National		Urban		Rural		Urban		Rural		Urban		Rural		YoY	MoM	YoY	MoM
	YoY	MoM	YoY	MoM	YoY	MoM	YoY	MoM	YoY	MoM	YoY	MoM	YoY	MoM	YoY	MoM	YoY	MoM
Feb-23	31.5	4.3	28.8	4.5	35.6	4.0	41.9	4.3	47.0	3.9	20.8	4.7	25.3	4.1	33.6	3.7	36.4	8.2
Mar-23	35.4	3.7	33.0	3.9	38.9	3.5	47.1	5.6	50.2	4.5	24.1	2.7	28.5	2.4	40.4	5.8	37.5	4.7
Apr-23	36.4	2.4	33.5	2.0	40.7	3.0	46.8	3.4	52.2	4.2	24.9	1.0	29.9	1.6	42.1	2.7	33.4	0.1
May-23	38.0	1.6	35.1	1.5	42.2	1.7	48.1	1.9	52.4	1.4	26.6	1.2	32.5	2.0	43.0	1.3	32.8	1.0
Jun-23	29.4	-0.3	27.3	0.1	32.4	-0.8	40.8	0.1	41.5	-1.6	18.7	0.1	23.8	0.1	34.9	0.2	22.4	-0.3
Jul-23	28.3	3.5	26.3	3.6	31.3	3.3	40.2	3.7	41.3	3.5	17.3	3.5	22.0	3.0	29.3	2.8	23.1	2.5
Aug-23	27.4	1.7	25.0	1.6	30.9	1.9	38.8	0.6	40.6	0.8	16.3	2.4	22.0	3.1	27.9	4.1	24.3	4.2
Sep-23	31.4	2.0	29.7	1.7	33.9	2.5	33.9	1.5	35.4	1.8	26.8	1.8	32.3	3.2	32.0	1.7	26.4	3.1
Oct-23	26.8	1.0	25.5	1.1	28.7	0.9	28.9	0.6	28.6	0.7	23.1	1.4	28.8	1.1	34.2	0.2	24.6	-1.9
Nov-23	29.2	2.7	30.4	4.3	27.5	0.4	29.8	0.8	29.2	1.0	30.9	7.0	25.9	-0.2	30.6	3.3	26.4	1.4
Dec-23	29.7	0.8	30.9	0.7	27.9	1.0	28.8	-0.7	29.3	0.1	32.4	1.8	26.4	1.8	35.3	3.8	27.3	0.0
Jan-24	28.3	1.8	30.2	1.8	25.7	1.9	27.4	2.8	25.1	2.3	32.3	1.1	26.3	1.4	36.2	2.0	27.0	1.5
Feb-24	23.1	0.0	24.9	0.2	20.5	-0.3	20.2	-1.5	19.0	-1.1	28.2	1.5	22.1	0.6	30.4	-0.8	18.7	1.1
Mar-24	20.7	1.7	21.9	1.4	19.0	2.1	16.6	2.4	17.1	2.8	25.8	0.7	21.0	1.4	25.9	2.1	14.8	1.3
Apr-24	17.3	-0.4	19.4	-0.1	14.5	-0.9	11.3	-1.3	9.5	-2.6	25.6	0.8	20.0	0.8	21.6	-0.7	13.9	-0.7
May-24	11.8	-3.2	14.3	-2.8	8.2	-3.9	2.2	-6.3	-0.1	-7.4	23.6	-0.4	17.2	-0.4	15.3	-4.0	9.9	-2.5
Jun-24	12.6	0.5	14.9	0.6	9.3	0.3	2.6	0.4	1.3	-0.2	24.3	0.7	17.9	0.8	16.6	1.3	10.6	0.4
July-24	11.1	2.1	13.2	2.0	8.1	2.2	3.4	4.5	1.3	3.6	20.7	0.5	15.5	0.9	15.7	2.0	10.4	2.3
Aug-24	9.6	0.4	11.7	0.3	6.7	0.6	4.1	1.3	1.9	1.3	17.4	-0.4	11.9	-0.2	10.8	-0.3	6.3	0.3
Sep-24	6.9	-0.5	9.3	-0.5	3.6	-0.5	1.7	-0.8	-0.9	-1.0	15.0	-0.3	8.4	-0.1	9.2	0.2	1.9	-1.1
Oct-24	7.2	1.2	9.3	1.1	4.2	1.5	2.7	1.6	0.6	2.2	14.2	0.7	8.0	0.8	9.7	0.6	3.9	0.0
Nov-24	4.9	0.5	5.2	0.5	4.3	0.5	1.7	-0.2	-0.2	0.2	7.8	1.0	9.1	0.8	7.3	1.0	2.3	-0.1

** SPI for quintile 1. Digits 0.0* are due to rounding off.

Core inflation (NFNE)

7. Measured by **non-food non-energy Urban** increased to 8.9% on (YoY) basis in November 2024 as compared to 8.6% in the previous month and 18.6% in November 2023. On (MoM) basis, it increased by 1.2% in November 2024 as compared to an increase of 0.6% in previous month and an increase of 0.9% in corresponding month of last year i.e. November, 2023.
8. Measured by **non-food non-energy Rural** decreased to 10.9% on (YoY) basis in November 2024 as compared to 11.7% in the previous month and 25.9% in November 2023. On (MoM) basis, it remained unchanged at 0.7% in November 2024 as compared to previous month and an increase of 1.4% in corresponding month of last year i.e. November 2023.

Core inflation (Trimmed)

9. Measured by 20% **weighted trimmed mean Urban** increased to 7.5% on (YoY) basis in November 2024 as compared to 6.4% in the previous month and 22.9% in November 2023. On (MoM) basis, it increased by 0.6% in November 2024 as compared to an increase of 0.7% in the previous month and an increase of 0.1% in corresponding month of last year i.e. November 2023.
10. Measured by 20% **weighted trimmed mean Rural** increased to 7.8% on (YoY) basis in November 2024 as compared to 7.2% in the previous month and 27.9% in November 2023. On (MoM) basis, it increased by 0.5% in November 2024 as compared to an increase of 1.0% in the previous month and an increase of 0.5% in corresponding month of last year i.e. November 2023.

Table 1.b Core Inflation (%) (Base 2015-16)

Period	NFNE				Trimmed			
	Urban		Rural		Urban		Rural	
	YoY	MoM	YoY	MoM	YoY	MoM	YoY	MoM
Nov-23	18.6	0.9	25.9	1.4	22.9	0.1	27.9	0.5
Dec-23	18.2	0.8	25.1	0.9	23.3	0.3	28.0	0.7
Jan-24	17.8	1.1	24.6	1.2	22.1	1.0	25.8	1.2
Feb-24	15.5	0.3	21.9	0.4	16.0	0.3	21.3	0.4
Mar-24	12.8	0.1	20.0	0.8	14.8	0.6	18.4	0.9
Apr-24	13.1	2.1	19.3	2.0	13.4	0.5	15.0	0.6
May-24	12.3	0.4	17.0	0.5	11.0	-0.5	10.6	-0.9
June-24	12.2	0.6	17.0	0.9	10.3	0.6	11.0	0.5
July-24	11.7	0.7	16.9	1.1	10.3	1.2	11.3	1.7
Aug-24	10.2	0.4	14.4	0.6	8.0	0.2	9.6	0.4
Sep-24	9.3	0.2	12.1	0.5	7.1	-0.1	7.4	-0.1
Oct-24	8.6	0.6	11.7	0.7	6.4	0.7	7.2	1.0
Nov-24	8.9	1.2	10.9	0.7	7.5	0.6	7.8	0.5

Table 1.1 Period Average and Y-o-Y % Change

INDEX	Average July - November % Changes			November over November % Changes		
	2024-2025	2023-2024	2022-2023	2024-2025	2023-2024	2022-2023
CPI (National)	7.88	28.62	25.14	4.86	29.23	23.84
CPI (Urban)	9.66	27.38	23.41	5.24	30.44	21.56
CPI (Rural)	5.38	30.39	27.72	4.31	27.53	27.21
SPI	10.48	30.80	28.30	7.30	30.62	27.05
WPI	4.87	24.98	35.59	2.26	26.44	27.73

Figure 1: Urban Inflation - YoY, Special Indices

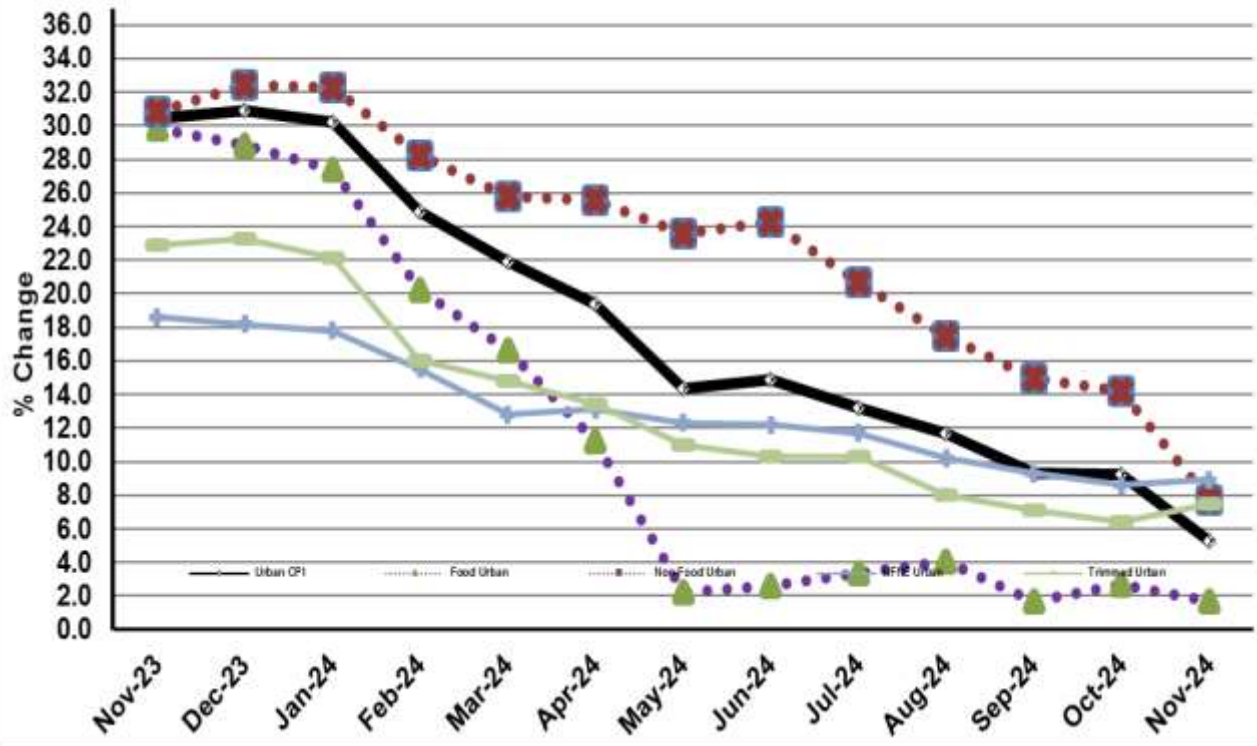


Figure 2: Rural Inflation - YoY, Special Indices

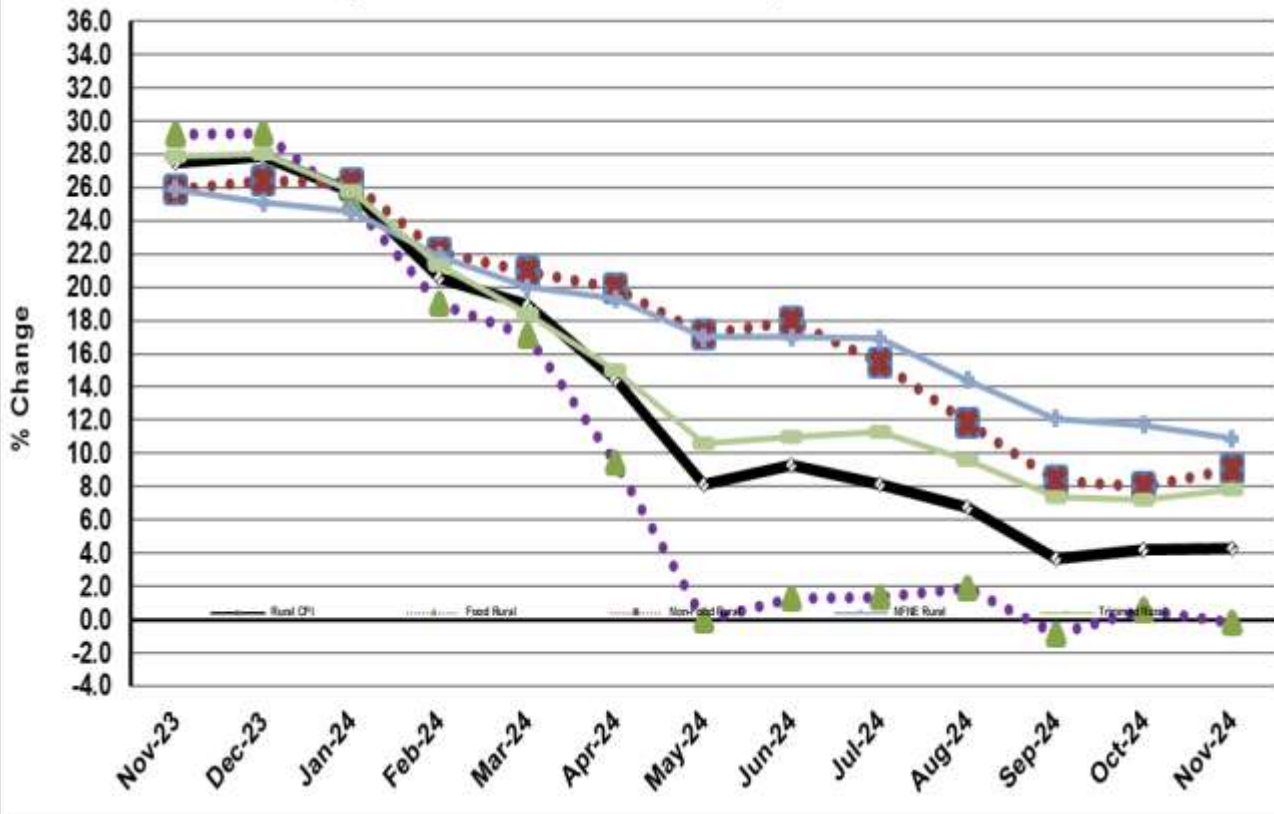


Figure 3: Urban Inflation - MoM, Special Indices

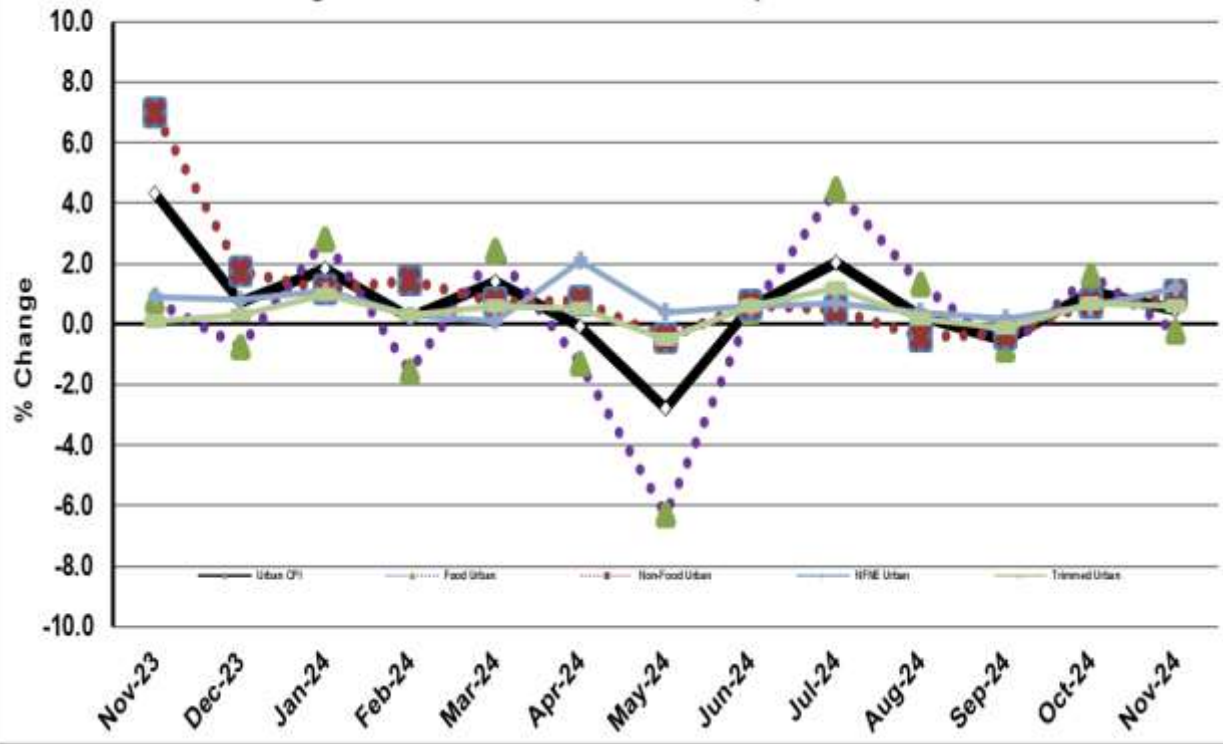


Figure 4: Rural Inflation - MoM, Special Indices

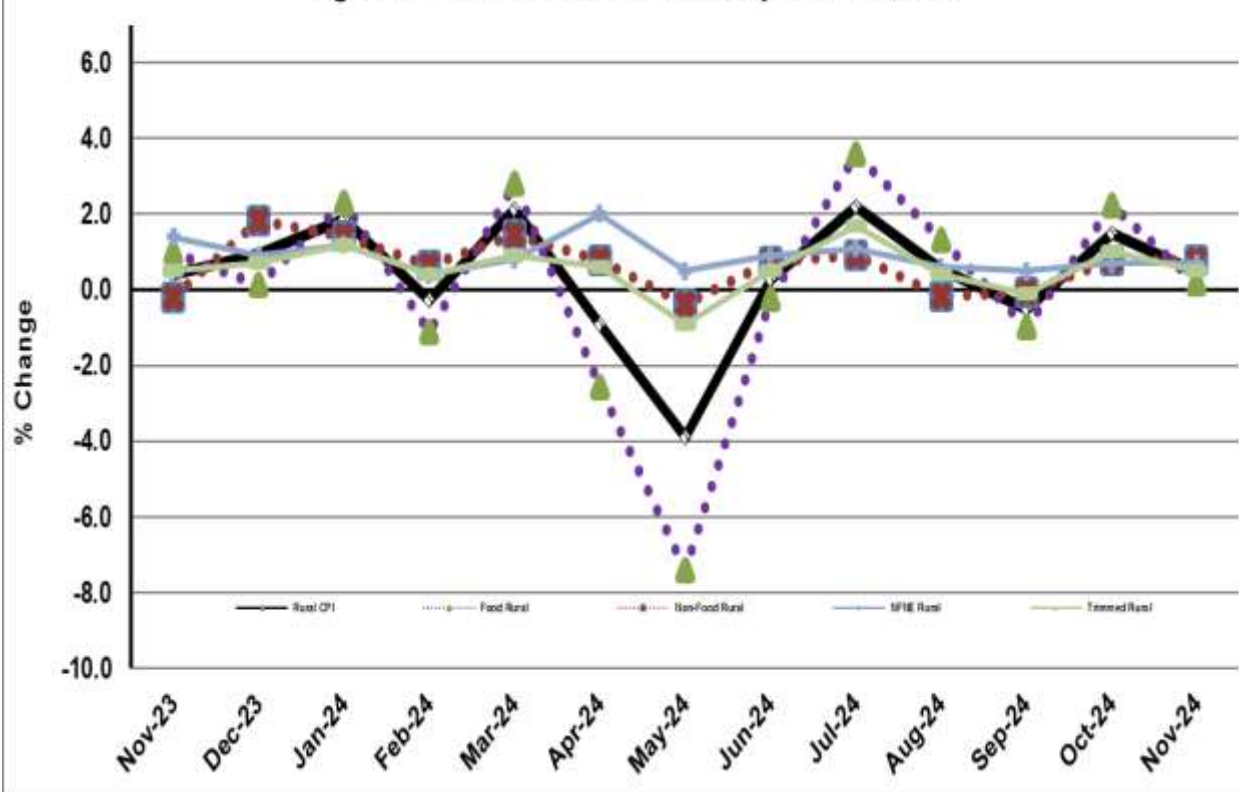


Figure 5: CPI YoY (National, Urban, Rural)

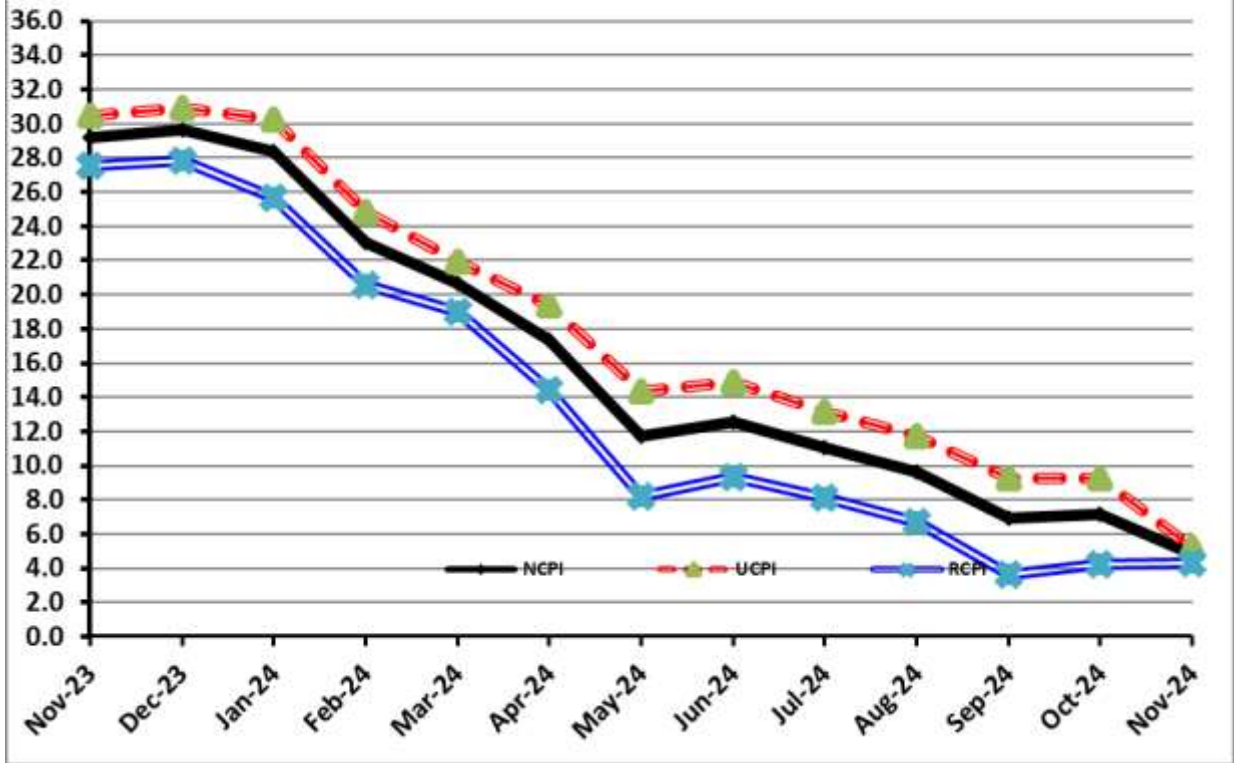
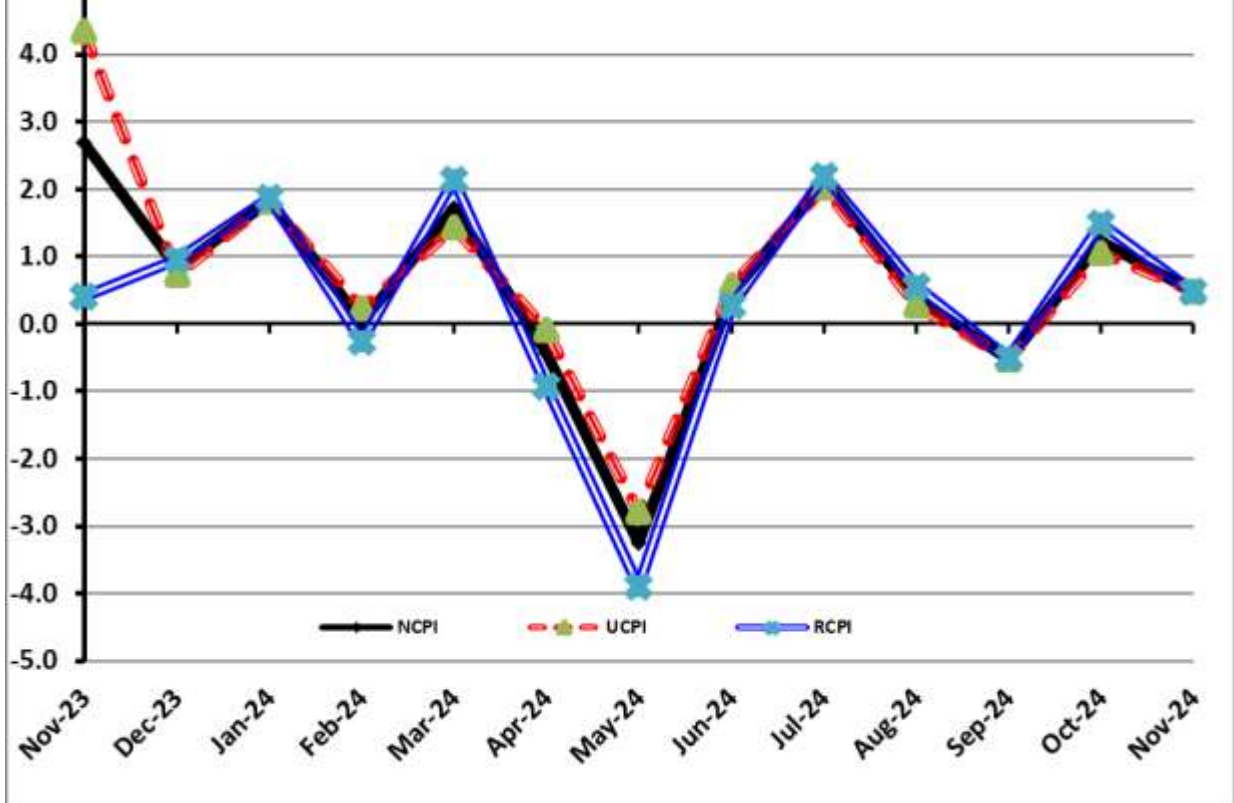


Figure 6: CPI MoM (National, Urban, Rural)



I. National Consumer Price Index (N-CPI)

The **National Consumer Price Index** for **November 2024** is increased by **0.49%** over **October 2024** and increased by **4.86%** over corresponding month of the last year i.e. **November 2023**.

Table 1: Consumer Price Index (National) by Group of Commodities and Services (Base 2015-16)

No	Group	Group Weight (%)	Indices			% Change Nov 2024 Over		Impact (In % points) Nov 2024 Over	
			Nov 24	Oct24	Nov23	Oct 24	Nov 23	Oct 24	Nov 23
	General	100.00	265.46	264.17	253.15	0.49	4.86	0.49	4.86
1.	Food & Non-alcoholic Bev.	34.58	282.28	282.86	282.95	-0.20	-0.24	-0.08	-0.09
	<i>Non-perishable Food Items</i>	29.60	278.50	278.38	282.85	0.04	-1.54	0.01	-0.51
	<i>Perishable Food Items</i>	4.99	304.72	309.47	283.54	-1.53	7.47	-0.09	0.42
2.	Alcoholic Bev. & Tobacco	1.02	382.59	385.40	362.87	-0.73	5.43	-0.01	0.08
3.	Clothing & Footwear	8.60	252.06	246.76	220.38	2.15	14.37	0.17	1.08
4.	Housing, Water, Electricity, Gas & Fuels	23.63	240.27	239.31	222.69	0.40	7.89	0.09	1.64
5.	Furnishing & Household Equipment Maintenance	4.10	273.28	271.05	258.02	0.82	5.91	0.03	0.25
6.	Health	2.79	262.62	256.51	232.28	2.38	13.06	0.06	0.33
7.	Transport	5.91	301.79	299.63	310.34	0.72	-2.75	0.05	-0.20
8.	Communication	2.21	134.88	134.85	120.18	0.03	12.23	0.00	0.13
9.	Recreation & Culture	1.59	275.78	274.54	256.14	0.45	7.67	0.01	0.12
10.	Education	3.79	205.21	202.16	185.62	1.51	10.55	0.04	0.29
11.	Restaurants & Hotels	6.92	279.75	276.86	258.31	1.04	8.30	0.08	0.59
12.	Miscellaneous	4.87	300.78	298.54	267.18	0.75	12.57	0.04	0.65

II. Urban Consumer Price Index (UCPI)

The Urban Consumer Price Index for **November 2024** is increased by **0.49%** over **October 2024** and increased by **5.24%** over corresponding month of the last year i.e. **November 2023**.

Table 2: Consumer Price Index (Urban) by Group of Commodities and Services (Base 2015-16)

No	Group	Group Weight (%)	Indices			% Change Nov 2024 Over		Impact (In % points) Nov 2024 Over	
			Nov 24	Oct 24	Nov23	Oct 24	Nov 23	Oct 24	Nov 23
	General	100.00	261.92	260.64	248.87	0.49	5.24	0.49	5.24
1.	Food & Non-alcoholic Bev.	30.42	279.93	281.39	278.07	-0.52	0.67	-0.17	0.23
	<i>Non-perishable Food Items</i>	25.97	277.31	277.68	277.90	-0.13	-0.21	-0.04	-0.06
	<i>Perishable Food Items</i>	4.46	295.15	303.03	279.06	-2.60	5.77	-0.13	0.29
2.	Alcoholic Bev. & Tobacco	0.85	403.16	408.28	382.32	-1.25	5.45	-0.02	0.07
3.	Clothing & Footwear	8.01	244.54	237.24	211.64	3.08	15.55	0.22	1.06
4.	Housing, Water, Electricity, Gas & Fuels	27.03	246.49	245.75	229.11	0.30	7.59	0.08	1.89
5.	Furnishing & Household Equip. & Maintenance	4.09	264.13	261.24	250.25	1.11	5.55	0.05	0.23
6.	Health	2.31	267.04	260.72	232.12	2.42	15.04	0.06	0.32
7.	Transport	6.14	296.81	294.62	302.48	0.74	-1.87	0.05	-0.14
8.	Communication	2.35	138.39	138.37	125.00	0.01	10.71	0.00	0.13
9.	Recreation & Culture	1.73	260.05	259.72	245.81	0.13	5.79	0.00	0.10
10.	Education	4.88	199.91	195.98	186.73	2.01	7.06	0.07	0.26
11.	Restaurants & Hotels	7.41	276.36	272.98	258.07	1.24	7.09	0.10	0.54
12.	Miscellaneous	4.77	291.88	289.03	262.84	0.99	11.05	0.05	0.56

Main contributors to month-on-month and year-on-year percentage changes are given below and detail is given in **Annexure-A**.

1. MONTH-ON-MONTH Top few commodities which varied from previous month are given below:

FOOD

Increased: Tomatoes (26.56%), Eggs (11.83%), Pulse Moong (11.15%), Honey (10.34%), Potatoes (8.64%), Mustard Oil (7.48%), Vegetable Ghee (4.69%), Butter (3.49%), Dry Fruits (3.05%), Fish (2.96%), Cooking Oil (2.41%), Beans (2.35%), Wheat (2.11%), Readymade Food (1.60%), Sweetmeat (1.21%), Beverages (1.02%), Wheat Flour (0.89%), Meat (0.61%), Milk Products (0.45%), Milk Powder (0.17%), Milk Fresh (0.15%) and Besan (0.07%).

Decreased: Chicken (16.94%), Pulse Mash (7.36%), Fresh Vegetables (7.17%), Fresh Fruits (6.73%), Pulse Gram (4.33%), Onions (3.03%), Condiments and Spices (2.81%), Sugar (2.43%), Gur (2.06%), Gram Whole (1.52%), Pulse Masoor (1.24%), Rice (0.86%) and Wheat Products (0.48%).

NON-FOOD:

Increased: Footwear (12.36%), Liquified Hydrocarbons (8.95%), Woolen Readymade Garments (6.91%), Electrical Appliances for Personal (5.21%), Drugs & Medicines (4.42%) and Solid Fuel (4.08%).

Decreased: Electricity Charges (0.22%), Major Tools & Equipments (0.13%), Stationery (0.05%) and Construcion Input Items (0.03%).

YEAR-ON-YEAR: Top few commodities which varied from corresponding month of previous year i.e. **November, 2023** are given below:

FOOD

Increased: Pulse Gram (71.94%), Besan (59.13%), Pulse Moong (36.94%), Fish (27.14%), Gram Whole (25.08%), Milk Powder (20.93%), Meat (20.65%), Honey (19.64%), Onions (19.25%), Beans (16.17%), Dry Fruits (15.83%), Butter (12.06%), Sweetmeat (10.72%), Milk Fresh (10.20%), Fresh Vegetables (10.07%), Condiments and Spices (9.20%), Milk Products (8.53%), Beverages (8.42%) and Chicken (8.13%).

Decreased: Wheat (32.58%), Wheat Flour (32.56%), Tomatoes (13.61%), Tea (11.76%), Wheat Products (9.10%), Rice (6.45%), Cooking Oil (4.54%), Pulse Masoor (3.91%), Sugar (3.10%) and Pulse Mash (2.25%).

NON-FOOD:

Increased: Motor Vehicle Tax (168.79%), Footwear (31.88%), Dental Services (24.51%), Personal Effects (22.58%), Woolen Readymade Garments (19.10%), Hospitals Services (16.90%), Communication Services (15.68%), Drugs and Medicines (15.39%), Hosiry (14.93%) and Water Supply (14.72%).

Decreased: Motor Fuel (9.97%) and Communication Apparatus (0.86%).

III. Rural Consumer Price Index (RCPI)

The Rural Consumer Price Index for November 2024 is increased by 0.48% over October 2024 and increased to 4.31% over corresponding month of the last year i.e. November 2023.

Table 3: Consumer Price Index (Rural) by Group of Commodities and Services (Base 2015-16)

No	Group	Group Weight (%)	Indices			% Change Nov 2024 Over		Impact (In % points) Nov 2024 Over	
			Nov 24	Oct 24	Nov23	Oct 24	Nov 23	Oct 24	Nov 23
	General	100.00	270.81	269.51	259.61	0.48	4.31	0.48	4.31
1.	Food & Non-alcoholic Bev.	40.87	284.92	284.51	288.43	0.14	-1.22	0.06	-0.55
	<i>Non-perishable Food Items</i>	<i>35.08</i>	<i>279.82</i>	<i>279.16</i>	<i>288.38</i>	<i>0.24</i>	<i>-2.97</i>	<i>0.09</i>	<i>-1.16</i>
	<i>Perishable Food Items</i>	<i>5.79</i>	<i>315.84</i>	<i>316.95</i>	<i>288.74</i>	<i>-0.35</i>	<i>9.39</i>	<i>-0.02</i>	<i>0.60</i>
2.	Alcoholic Bev. & Tobacco	1.28	361.85	362.33	343.26	-0.13	5.42	0.00	0.09
3.	Clothing & Footwear	9.48	261.64	258.89	231.52	1.06	13.01	0.10	1.10
4.	Housing, Water, Electricity, Gas & Fuels	18.49	226.55	225.10	208.53	0.64	8.64	0.10	1.28
5.	Furnishing & Household Equip. & Maintenance	4.10	287.05	285.81	269.71	0.43	6.43	0.02	0.27
6.	Health	3.51	258.24	252.33	232.43	2.34	11.10	0.08	0.35
7.	Transport	5.56	310.10	307.99	323.43	0.69	-4.12	0.04	-0.29
8.	Communication	1.99	128.64	128.57	111.61	0.05	15.26	0.00	0.13
9.	Recreation & Culture	1.38	305.61	302.66	275.74	0.97	10.83	0.02	0.16
10.	Education	2.13	223.51	223.51	181.78	0.00	22.96	0.00	0.34
11.	Restaurants & Hotels	6.19	285.88	283.88	258.73	0.70	10.49	0.05	0.65
12.	Miscellaneous	5.02	313.56	312.20	273.42	0.44	14.68	0.03	0.78

Main contributors to Month-on-Month and Year-on-Year percentage changes are given below and detail is given in **Annexure-B**.

1. MONTH-ON-MONTH Top few commodities which varied from previous month are given below:

FOOD

Increased: Tomatoes (26.15%), Eggs (10.26%), Potatoes (9.56%), Pulse Moong (7.75%), Cooking Oil (6.75%), Vegetable Ghee (6.30%), Mustard Oil (5.65%), Dry Fruits (5.63%), Honey (5.11%), Wheat (3.56%), Gram Whole (1.59%), Fish (1.26%), Beverages (0.90%), Besan (0.86%), Readymade Food (0.71%), Pulse Gram (0.64%), Wheat Flour (0.58%) and Meat (0.45%).

Decreased: Chicken (16.70%), Onions (8.24%), Fresh Fruits (6.07%), Gur (3.79%), Sugar (3.62%), Pulse Mash (3.15%), Fresh Vegetables (2.69%), Rice (2.29%) and Condiments & Spices(1.76%).

NON-FOOD

Increased: Woolen Readymade Garments (5.94%), Liquefied Hydrocarbons (5.27%), Household Textiles (4.23%), Drugs and Medicines (3.92%), Readymade Garments (3.21%), Dental Services (2.47%), Hospitals Services (1.24%), Transport Services (1.23%), Woolen Cloth (1.16%) and Solid Fuel (1.14%).

Decreased: Electricity Charges (0.22%).

YEAR-ON-YEAR: Top few commodities which varied from corresponding month of previous year i.e. November, 2023 are given below:

FOOD

Increased: Pulse Gram (69.40%), Besan (53.63%), Pulse Moong (37.02%), Milk Powder (26.62%), Onions (25.04%), Butter (24.38%), Meat (22.39%), Gram Whole (21.67%), Fish (21.54%), Beans (18.89%), Fresh Vegetables (17.51%), Dry Fruits (13.83%), Honey (13.63%), Milk Products (10.9%), Milk Fresh (10.10%) and Chicken (9.82%).

Decreased: Wheat Flour (35.14%), Wheat (33.74%), Tomatoes (12.15%), Wheat Products (10.36%), Sugar (6.32%), Tea (4.85%), Rice (4.74%) and Fresh Fruits (0.93%).

NON-FOOD

Increased: Motor Vehicle Tax (126.61%), Personal Effects (26.75%), Education (22.96%), Communication Services (18.70%), Woolen Readymade Garments (18.52%), Cotton Cloth (17.77%), Dental Services (16.73%), Drugs & Medicines (15.81%) and Marriage Hall Charges (14.88%).

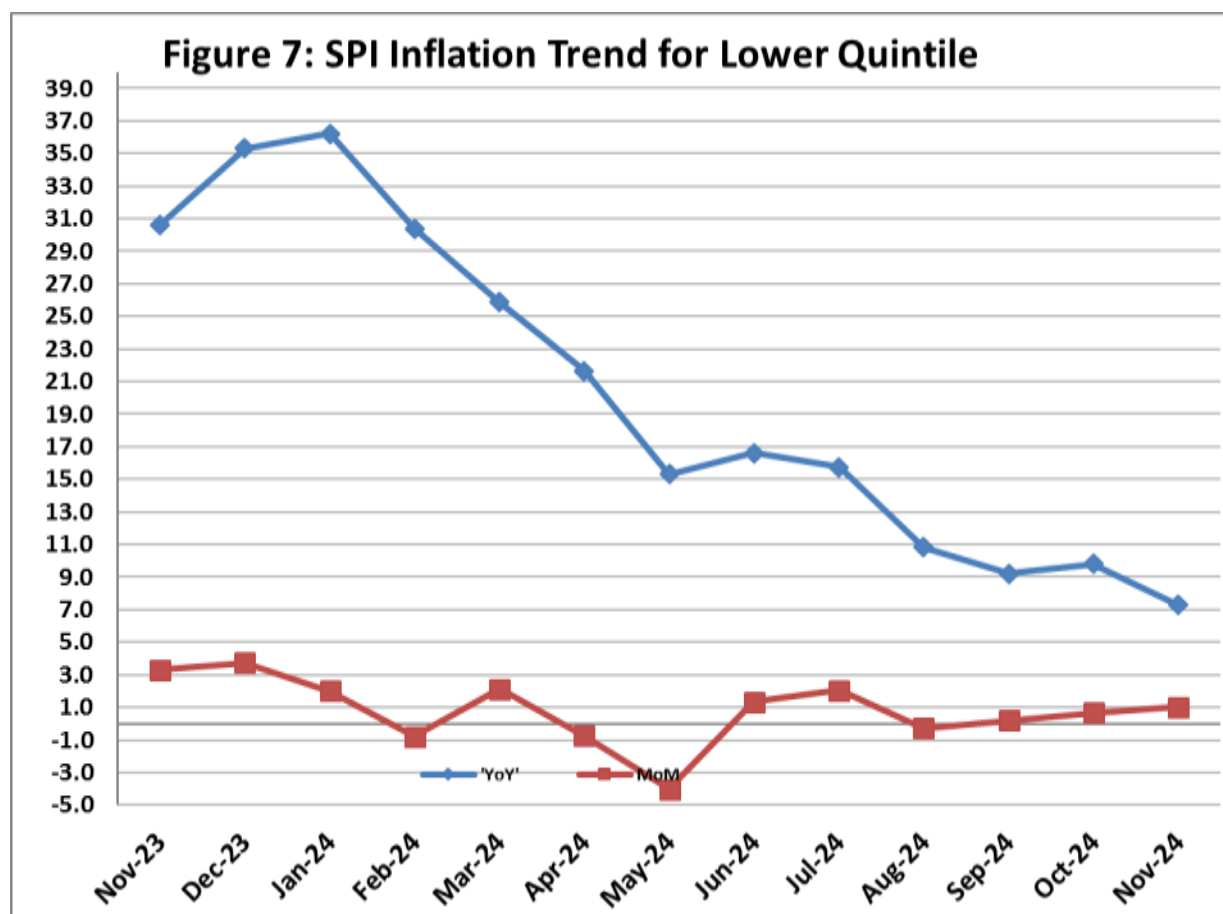
Decreased: Motor Fuels (10.90%).

IV. Sensitive Price Indicator

Quintile-wise percentage changes YoY and MoM are given below in Table 4. The series from November 2023 to November 2024 is also graphed below in Figure 7.

Table 4: Sensitive Price Indicator (Base 2015-16)					
Quintiles	Indices			% Change Nov 2024 Over	
	Nov 2024	Oct 2024	Nov 2023	Oct 2024	Nov 2023
1	316.22	312.95	294.70	1.04	7.30
2	313.15	310.49	286.32	0.86	9.37
3	334.04	330.25	297.57	1.15	12.26
4	321.88	318.03	290.44	1.21	10.82
5	322.26	319.83	294.17	0.76	9.55
Combined	322.44	319.21	292.23	1.01	10.34

Table 4.1: Weekly Percentage Change of SPI During November 2024				
Quintiles	% Change over Previous week			
	07-11-2024	14-11-2024	21-11-2024	28-11-2024
Quintile 1	0.29	0.83	0.91	0.06
Combined	0.24	0.55	0.67	-0.03



V. Wholesale Price Index

The Wholesale Price Index for **November, 2024** is decreased by **0.19%** over **October 2024**. It increased to **2.22%** over the corresponding month of the last year i.e. **November, 2023**. YoY and MoM movements, from November, 2023 to November, 2024 are also graphed below in Figure 8.

Table 5: Wholesale Price Index by Group of Commodities (Base 2015-16)

No	Group	Group Weight (%)	Indices			% Change Nov 2024 Over		Impact (In % points) Nov 2024 Over	
			Nov 24	Oct 24	Nov23	Oct 24	Nov 23	Oct 24	Nov 23
	General	100.00	312.91	313.50	306.10	-0.19	2.22	-0.19	2.22
1	Agriculture Forestry & Fishery	25.77	282.91	291.04	271.31	-2.79	4.28	-0.67	0.98
2	Ores/Minerals, Elec., Gas & Water	12.01	366.60	366.68	350.19	-0.02	4.69	0.00	0.64
3	Food, Beverages, Tobacco, Textiles & Leather Products	31.11	276.38	272.86	260.49	1.29	6.10	0.35	1.61
	i. Food Products, Beverages & Tobacco	20.07	291.32	286.87	275.69	1.55	5.67	0.29	1.02
	ii. Textiles & Apparels	10.33	253.26	251.41	236.17	0.74	7.24	0.06	0.58
	iii. Leather Products	0.71	190.25	188.92	184.66	0.70	3.03	0.00	0.01
4	Other Transportable Goods	22.40	339.62	337.73	359.93	0.56	-5.64	0.14	-1.49
5	Metal Product, Machinery & Equipment	8.72	389.47	389.45	372.74	0.01	4.49	0.00	0.48

Main contributors to month-on-month and year-on-year percentage changes are given below and detail is given in **Annexure-C**.

1. **MONTH-ON-MONTH:** Top few commodities which varied from previous month are given below:

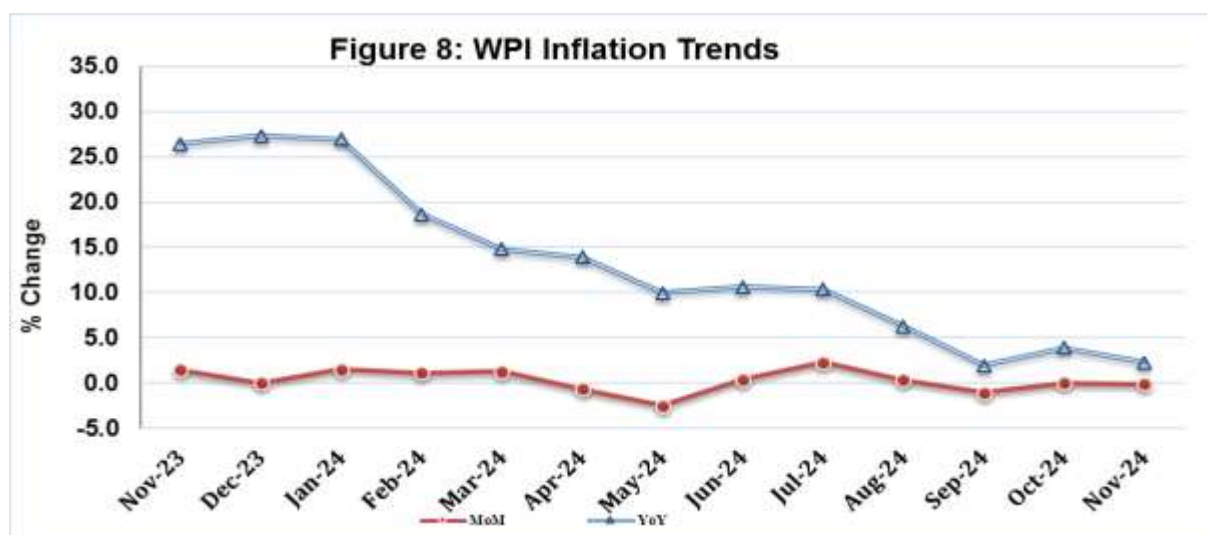
Increased: Sugar Confectionary (27.54%), Eggs (17.26%), Chocolate (15.73%), Edible Roots / Potatoes (10.82%), Cotton Seeds (8.84%), Bed Sheets (8.63%), Vegetable Ghee (8.20%), Fuel Wood in Logs (5.41%), Steel Products (4.82%), Vegetable Oils Refined (4.62%), Blankets (4.32%) and Readymade Garments (3.93%).

Decreased: Vegetables (25.06%), Poultry (18.37%), Stimulant & Spice Crops (15.24%), Fresh Fruits (12.33%), Millet / Bajra (5.07%), Cultivators (3.84%), Sugar Crops (3.70%), Dry Fruits (2.79%), Sugar Refined (2.43%), Other Cereal Flour (1.59%) and Pulses (1.35%).

YEAR-ON-YEAR: Top few commodities which varied from previous year are given below:

Increased: Other Cereal Flour (59.42%), Concrete Mixture (31.75%), Sugar Confectionary (29.91%), Sugar Crops (29.37%), Engines & Motors (28.57%), Electric Wires (27.54%), Cement (26.26%), Processed Liquid Milk (26.08%), Hard Board (25.00%), Dairy Products (23.99%), Dyeing Material (23.72%) and Stimulant & Spice Crops (22.89%).

Decreased: Wheat (33.40%), Wheat Flour (32.17%), Kerosene Oil (21.36%), Spices (18.86%), Diesel Oil (17.29%), Edible Roots / Potatoes (14.93%), Furnace Oil (12.38%), Motor Spirit (12.36%), Chemicals (10.44%), Rice (6.75%) and Steel Bar & Sheets (6.62%).



Annexure A:CPI (Urban) Index Numbers by Commodity Groups & Commodities (2015-16=100)

Item and Specification	Weight	Index Numbers			% Change in Nov 2024 over	
		Nov 24	Oct 24	Nov 23	Oct 2024	Nov 2023
General	100.0000	261.92	260.64	248.87	+ 0.49	+ 5.24
Food and non-alcoholic Beverages	30.4215	279.93	281.39	278.07	- 0.52	+ 0.67
01 Wheat	0.6120	239.83	234.88	355.70	+ 2.11	- 32.58
02 Wheat flour	3.0075	239.82	237.71	355.62	+ 0.89	- 32.56
03 Wheat products	0.0936	292.49	293.91	321.76	- 0.48	- 9.10
04 Besan	0.0830	321.18	320.94	201.83	+ 0.07	+ <u>59.13</u>
05 Rice	1.1804	312.05	314.76	333.57	- 0.86	- 6.45
06 Bakery and confectionary	0.4770	262.97	262.99	265.86	- 0.01	- 1.09
07 Nimco	0.1224	292.66	292.50	278.74	+ 0.05	+ 4.99
08 Meat	2.0411	323.58	321.62	268.20	+ 0.61	+ 20.65
09 Chicken	1.3631	269.26	324.19	249.02	- 16.94	+ 8.13
10 Fish	0.3855	213.87	207.73	168.22	+ 2.96	+ 27.14
11 Milk fresh	7.1070	259.93	259.55	235.88	+ 0.15	+ 10.20
12 Milk products	0.6407	265.51	264.32	244.64	+ 0.45	+ 8.53
13 Milk powder	0.3106	302.94	302.42	250.50	+ 0.17	+ 20.93
14 Eggs	0.5083	390.09	348.81	385.64	+ 11.83	+ 1.15
15 Butter	0.0932	389.46	376.31	347.56	+ 3.49	+ 12.06
16 Mustard oil	0.0120	310.45	288.85	289.25	+ 7.48	+ 7.33
17 Cooking oil	1.1016	306.42	299.20	320.98	+ 2.41	- 4.54
18 Vegetable ghee	1.0324	326.11	311.51	317.46	+ 4.69	+ 2.72
19 Dry fruits	0.3299	296.58	287.80	256.04	+ 3.05	+ 15.83
20 Fresh fruits	1.4363	189.46	203.14	188.06	- 6.73	+ 0.74
21 Pulse masoor	0.1624	208.50	211.12	216.98	- 1.24	- 3.91
22 Pulse moong	0.1697	235.83	212.18	172.22	+ 11.15	+ 36.94
23 Pulse mash	0.1152	220.18	237.68	225.24	- 7.36	- 2.25
24 Pulse gram	0.1660	325.32	340.04	189.21	- 4.33	+ <u>71.94</u>
25 Gram whole	0.0912	319.38	324.31	255.35	- 1.52	+ 25.08
26 Beans	0.0408	384.23	375.40	330.76	+ 2.35	+ 16.17
27 Potatoes	0.4496	438.57	403.68	441.96	+ 8.64	- 0.77
28 Onions	0.5928	359.21	370.44	301.22	- 3.03	+ 19.25
29 Tomatoes	0.3459	358.95	283.61	415.49	+ 26.56	- 13.61
30 Fresh vegetables	1.5306	295.01	317.78	268.02	- 7.17	+ 10.07
31 Sugar	1.1130	213.05	218.36	219.86	- 2.43	- 3.10
32 Gur	0.0379	242.53	247.62	237.78	- 2.06	+ 2.00
33 Honey	0.1017	208.55	189.01	174.32	+ 10.34	+ 19.64
34 Sweetmeat	0.3535	316.56	312.78	285.90	+ 1.21	+ 10.72
35 Ice cream	0.1044	199.33	199.33	198.48	+ 0.00	+ 0.43
36 Condiments and Spices	1.3340	343.27	353.20	314.36	- 2.81	+ 9.20
37 Dessert preparation	0.0419	270.14	269.99	263.38	+ 0.06	+ 2.57
38 Tea	0.8427	332.73	332.73	377.09	+ 0.00	- 11.76
39 Beverages	0.8906	254.18	251.62	234.43	+ 1.02	+ 8.42
Alcoholic Beverages, Tobacco	0.8540	403.16	408.28	382.32	- 1.25	+ 5.45
40 Cigarettes	0.7167	399.64	406.25	384.07	- 1.63	+ 4.05
41 Pan prepared	0.1373	421.50	418.90	373.16	+ 0.62	+ 12.95
Clothing and footwear	8.0096	244.54	237.24	211.64	+ 3.08	+ 15.55
42 Cotton cloth	2.2227	280.13	279.95	244.87	+ 0.06	+ 14.40
43 Woolen cloth	0.8361	235.28	228.89	210.63	+ 2.79	+ 11.70
44 Readymade garments	1.3196	208.75	206.62	193.70	+ 1.03	+ 7.77
45 Woolen readymade garments	0.4307	246.66	230.71	207.10	+ 6.91	+ 19.10
46 Tailoring	1.0741	228.82	228.16	208.48	+ 0.29	+ 9.76
47 Hosiery	0.4070	232.65	227.67	202.42	+ 2.19	+ 14.93
48 Dopatta	0.1713	197.45	197.13	173.29	+ 0.16	+ 13.94
49 Cleaning and laundering	0.0665	263.18	262.20	249.62	+ 0.37	+ 5.43
50 Footwear	1.4816	246.91	219.75	187.22	+ 12.36	+ 31.88
Housing, water, Elec., Gas and other Fuels	27.0332	246.49	245.75	229.11	+ 0.30	+ 7.59
51 House rent	19.2558	165.69	165.69	157.98	+ 0.00	+ 4.88
52 Construction input items	0.3765	266.10	266.17	257.80	- 0.03	+ 3.22
53 Construction wage rates	0.2025	221.34	217.43	210.88	+ 1.80	+ 4.96
54 Water supply	0.5269	228.37	221.86	199.06	+ 2.93	+ 14.72
55 Garbage collection	0.1064	261.18	252.22	240.04	+ 3.55	+ 8.81
56 Electricity charges	4.5562	288.85	289.50	259.91	- 0.22	+ 11.13
57 Gas charges	1.0807	1479.08	1479.08	1344.19	+ 0.00	+ 10.04
58 Liquified Hydrocarbons	0.5064	344.79	316.48	322.36	+ 8.95	+ 6.96

Annexure A:CPI (Urban) Index Numbers by Commodity Groups & Commodities (2015-16=100)

Item and Specification	Weight	Index Numbers			% Change in Nov 2024 over	
		Nov 24	Oct 24	Nov 23	Oct 2024	Nov 2023
59 Solid Fuel	0.4218	215.01	206.59	192.53	+ 4.08	+ 11.68
<i>Furnishing and household equipments</i>	4.0937	264.13	261.24	250.25	+ 1.11	+ 5.55
60 Furniture and furnishing	0.4750	254.06	253.65	225.26	+ 0.16	+ 12.79
61 Carpets	0.0308	150.55	150.43	146.55	+ 0.08	+ 2.73
62 Household textiles	0.3420	198.51	193.65	176.86	+ 2.51	+ 12.24
63 Household equipments	1.0032	263.50	261.92	248.41	+ 0.60	+ 6.07
64 Plastic products	0.0536	216.13	215.58	199.43	+ 0.26	+ 8.37
65 Major tools & equipments	0.0084	233.96	234.27	218.33	- 0.13	+ 7.16
66 Washing soap/detergents/match	1.4112	323.95	320.80	316.68	+ 0.98	+ 2.30
67 Household servant	0.7695	198.83	193.75	186.92	+ 2.62	+ 6.37
<i>Health</i>	2.3098	267.04	260.72	232.12	+ 2.42	+ 15.04
68 Drugs and medicines	1.0735	288.37	276.17	249.90	+ 4.42	+ 15.39
69 Therapeutic Appliances and Equipments	0.0054	153.39	150.99	146.79	+ 1.59	+ 4.50
70 Doctor (MBBS) clinic fee	0.4044	332.65	331.80	290.07	+ 0.26	+ 14.68
71 Dental services	0.0156	216.60	213.70	173.96	+ 1.36	+ 24.51
72 Medical tests	0.2367	200.55	198.20	183.90	+ 1.19	+ 9.05
73 Hospitals services	0.5742	210.81	209.84	180.34	+ 0.46	+ 16.90
<i>Transport</i>	6.1368	296.81	294.62	302.48	+ 0.74	- 1.87
74 Motor vehicles	0.8097	259.37	259.37	254.55	+ 0.00	+ 1.89
75 Motor vehicle accessories	0.1941	261.00	260.10	250.20	+ 0.35	+ 4.32
76 Motor fuel	2.9088	341.34	339.72	379.15	+ 0.48	- 9.97
77 Mechanical services	0.4290	230.74	230.14	216.83	+ 0.26	+ 6.42
78 Motor vehicle tax	0.0482	399.23	399.23	148.53	+ 0.00	+ <u>168.79</u>
79 Transport services	1.7470	257.39	252.66	228.11	+ 1.87	+ 12.84
<i>Communication</i>	2.3536	138.39	138.37	125.00	+ 0.01	+ 10.71
80 Postal services	0.0190	219.67	218.10	207.37	+ 0.72	+ 5.93
81 Communication apparatus	0.4524	188.41	188.38	190.04	+ 0.02	- 0.86
82 Communication Services	1.8822	125.55	125.55	108.53	+ 0.00	+ 15.68
<i>Recreation and culture</i>	1.7301	260.05	259.72	245.81	+ 0.13	+ 5.79
83 Recreation and culture	0.6478	153.91	152.95	148.34	+ 0.63	+ 3.75
84 Text books	0.6655	332.81	332.81	314.48	+ 0.00	+ 5.83
85 Newspapers	0.0716	216.94	216.94	211.87	+ 0.00	+ 2.39
86 stationery	0.3452	327.89	328.06	303.36	- 0.05	+ 8.09
<i>Education</i>	4.8807	199.91	195.98	186.73	+ 2.01	+ 7.06
87 Education	4.8807	199.91	195.98	186.73	+ 2.01	+ 7.06
<i>Restaurants and hotels</i>	7.4050	276.36	272.98	258.07	+ 1.24	+ 7.09
88 Readymade food	5.5235	283.99	279.53	266.44	+ 1.60	+ 6.59
89 Marriage Hall Charges	1.7514	260.26	260.01	238.60	+ 0.10	+ 9.08
90 Accommodation Services	0.1301	169.14	169.14	164.52	+ 0.00	+ 2.81
<i>Misc. goods and services</i>	4.7720	291.88	289.03	262.84	+ 0.99	+ 11.05
91 Personal Grooming Services	0.8001	253.09	250.97	228.60	+ 0.84	+ 10.71
92 Electrical Appliances for Per	0.0465	177.00	168.24	161.34	+ 5.21	+ 9.71
93 Appliances/Articles/Products	2.9807	266.20	265.24	250.54	+ 0.36	+ 6.25
94 Personal Effects n.e.c.	0.9447	411.42	402.27	335.63	+ 2.27	+ 22.58

Annexure B:CPI (Rural) Index Numbers by Commodity Groups & Commodities (2015-16=100)

Item and Specification	Weight	Index Numbers			% Change in Nov 2024 over			
		Nov 24	Oct 24	Nov 23	Oct 2024		Nov 2023	
General	100.0000	270.81	269.51	259.61	+	0.48	+	4.31
Food and non-alcoholic Beverages	40.8668	284.92	284.51	288.43	+	0.14	-	1.22
01 Wheat	3.4736	241.07	232.79	363.85	+	3.56	-	33.74
02 Wheat Flour	3.4297	238.03	236.65	367.00	+	0.58	-	35.14
03 Wheat Products	0.1068	290.13	289.77	323.65	+	0.12	-	10.36
04 Besan	0.0728	331.96	329.13	216.08	+	0.86	+	<u>53.63</u>
05 Rice	1.5501	411.03	420.65	431.47	-	2.29	-	4.74
06 Bakery and Confectionary	0.3702	303.40	302.32	299.87	+	0.36	+	1.18
07 Nimco	0.0774	299.48	301.85	282.61	-	0.79	+	5.97
08 Meat	1.7146	337.85	336.32	276.05	+	0.45	+	22.39
09 Chicken	1.4641	281.11	337.45	255.98	-	16.70	+	9.82
10 Fish	0.2640	227.60	224.76	187.27	+	1.26	+	21.54
11 Milk fresh	10.3803	255.93	255.67	232.46	+	0.10	+	10.10
12 Milk products	0.9624	256.72	256.57	231.48	+	0.06	+	10.90
13 Milk powder	0.1062	275.94	275.37	217.92	+	0.21	+	26.62
14 Eggs	0.5665	371.49	336.91	368.99	+	10.26	+	0.68
15 Butter	0.3333	304.08	293.78	244.48	+	3.51	+	24.38
16 Mustard oil	0.0136	327.45	309.95	307.64	+	5.65	+	6.44
17 Cooking oil	0.6011	355.77	333.26	335.90	+	6.75	+	5.92
18 Vegetable ghee	2.3764	362.19	340.71	336.72	+	6.30	+	7.56
19 Dry fruits	0.2496	348.79	330.20	306.42	+	5.63	+	13.83
20 Fresh fruits	1.4505	201.10	214.09	202.99	-	6.07	-	0.93
21 Pulse Masoor	0.2076	234.75	234.14	229.60	+	0.26	+	2.24
22 Pulse Moong	0.2510	251.18	233.12	183.31	+	7.75	+	37.02
23 Pulse Mash	0.1465	239.97	247.78	226.73	-	3.15	+	5.84
24 Pulse Gram	0.2751	338.28	336.12	199.69	+	0.64	+	<u>69.40</u>
25 Gram Whole	0.1116	330.03	324.87	271.25	+	1.59	+	21.67
26 Beans	0.0896	407.36	405.99	342.64	+	0.34	+	18.89
27 Potatoes	0.7437	480.95	438.97	470.40	+	9.56	+	2.24
28 Onions	0.8965	345.16	376.17	276.03	-	8.24	+	25.04
29 Tomatoes	0.5069	322.27	255.46	366.86	+	26.15	-	12.15
30 Fresh Vegetables	2.0947	311.19	319.79	264.83	-	2.69	+	17.51
31 Sugar	2.0296	212.62	220.60	226.96	-	3.62	-	6.32
32 Gur	0.1522	238.68	248.07	232.34	-	3.79	+	2.73
33 Honey	0.0296	202.27	192.44	178.00	+	5.11	+	13.63
34 Sweetmeat	0.3967	283.17	281.51	267.58	+	0.59	+	5.83
35 Ice Cream	0.0568	199.34	199.34	197.95	+	0.00	+	0.70
36 Condiments and Spices	1.4919	306.52	312.00	279.70	-	1.76	+	9.59
37 Dessert Preparation	0.0133	268.52	268.52	269.02	+	0.00	-	0.19
38 Tea	1.2566	333.85	333.85	350.86	+	0.00	-	4.85
39 Beverages	0.5537	244.48	242.29	230.15	+	0.90	+	6.23
Alcoholic Beverages, Tobacco	1.2786	361.85	362.33	343.26	-	0.13	+	5.42
40 Cigarettes	1.2364	362.27	362.77	344.35	-	0.14	+	5.20
41 Pan Prepared	0.0422	349.58	349.58	311.19	+	0.00	+	12.34
Clothing and footwear	9.4826	261.64	258.89	231.52	+	1.06	+	13.01
42 Cotton Cloth	2.8381	291.34	291.34	247.39	+	0.00	+	17.77
43 Woolen Cloth	1.0959	254.57	251.64	229.48	+	1.16	+	10.93
44 Readymade Garments	1.1345	236.15	228.81	216.98	+	3.21	+	8.83
45 Woolen Readymade Garments	0.5401	284.62	268.66	240.15	+	5.94	+	18.52
46 Tailoring	1.2999	244.77	242.57	220.62	+	0.91	+	10.95
47 Hosiery	0.4322	339.38	339.18	308.77	+	0.06	+	9.91
48 Dopatta	0.2078	242.19	241.28	215.56	+	0.38	+	12.35
49 Cleaning and Laundering	0.0176	251.35	251.35	247.65	+	0.00	+	1.49
50 Footwear	1.9165	226.42	224.98	206.93	+	0.64	+	9.42
Housing, water, Elec., Gas and other Fuels	18.4853	226.55	225.10	208.53	+	0.64	+	8.64
51 House Rent	8.6110	172.58	172.58	162.17	+	0.00	+	6.42
52 Construction Input Items	0.6306	252.71	252.58	224.86	+	0.05	+	12.39
53 Construction Wage Rates	0.2526	237.47	237.47	219.82	+	0.00	+	8.03
54 Water Supply	0.0645	311.91	311.91	277.95	+	0.00	+	12.22
55 Garbage Collection	0.0080	199.62	190.06	189.52	+	5.03	+	5.33
56 Electricity Charges	3.4431	288.85	289.50	259.91	-	0.22	+	11.13
57 Liquified Hydrocarbons	0.9994	315.56	299.75	303.30	+	5.27	+	4.04
58 Solid Fuel	4.4761	257.09	254.18	233.14	+	1.14	+	10.27

Annexure B:CPI (Rural) Index Numbers by Commodity Groups & Commodities (2015-16=100)

Item and Specification	Weight	Index Numbers			% Change in Nov 2024 over			
		Nov 24	Oct 24	Nov 23	Oct 2024	Nov 2023		
<i>Furnishing and household equipments</i>	4.1031	287.05	285.81	269.71	+	0.43	+	6.43
59 Furniture and Furnishing	0.5786	276.58	274.53	242.18	+	0.75	+	14.20
60 Household Textiles	0.4382	233.81	224.32	209.94	+	4.23	+	11.37
61 Household Equipments	1.2774	283.96	283.60	263.41	+	0.13	+	7.80
62 Plastic Products	0.0776	281.80	279.48	252.00	+	0.83	+	11.83
63 Major Tools and Equipments	0.0324	233.36	231.51	216.63	+	0.80	+	7.72
64 Washing Soaps, Detergents and	1.6989	307.92	308.50	301.07	-	0.19	+	2.28
<i>Health</i>	3.5141	258.24	252.33	232.43	+	2.34	+	11.10
65 Drugs and Medicines	1.5792	307.09	295.50	265.16	+	3.92	+	15.81
66 Doctor Clinic Fee	0.5128	288.55	288.55	279.73	+	0.00	+	3.15
67 Dental Services	0.0181	219.90	214.60	188.38	+	2.47	+	16.73
68 Medical Tests	0.3967	219.85	219.62	210.51	+	0.10	+	4.44
69 Hospitals Services	1.0073	182.02	179.79	166.46	+	1.24	+	9.35
<i>Transport</i>	5.5580	310.10	307.99	323.43	+	0.69	-	4.12
70 Motor Vehicles	0.7305	193.13	193.12	192.74	+	0.01	+	0.20
71 Motor Vehicles Accessories	0.1572	268.80	268.58	257.51	+	0.08	+	4.38
72 Motor Fuels	2.4932	341.68	339.91	383.46	+	0.52	-	10.90
73 Mechanical Services	0.3645	229.81	229.81	221.45	+	0.00	+	3.78
74 Motor Vehicle Tax	0.0174	342.03	342.03	150.93	+	0.00	+	126.61
75 Transport Services	1.7952	333.45	329.41	321.38	+	1.23	+	3.76
<i>Communication</i>	1.9940	128.64	128.57	111.61	+	0.05	+	15.26
76 Postal Services	0.0070	179.32	179.32	179.32	+	0.00	+	0.00
77 Communication Apparatus	0.3362	161.39	160.95	154.54	+	0.27	+	4.43
78 Communication Services	1.6508	121.76	121.76	102.58	+	0.00	+	18.70
<i>Recreation and culture</i>	1.3764	305.61	302.66	275.74	+	0.97	+	10.83
79 Recreation and Culture	0.4763	242.38	234.33	217.03	+	3.44	+	11.68
80 Text Books	0.5047	360.47	360.47	327.72	+	0.00	+	9.99
81 Newspapers	0.0230	242.52	242.52	242.52	+	0.00	+	0.00
82 Stationery	0.3724	316.03	315.42	282.44	+	0.19	+	11.89
<i>Education</i>	2.1342	223.51	223.51	181.78	+	0.00	+	22.96
83 Education	2.1342	223.51	223.51	181.78	+	0.00	+	22.96
<i>Restaurants and hotels</i>	6.1895	285.88	283.88	258.73	+	0.70	+	10.49
84 Readymade Food	3.8001	310.83	308.63	286.18	+	0.71	+	8.61
85 Marriage Hall Charges	2.2525	254.26	252.48	221.33	+	0.71	+	14.88
86 Accommodation Services	0.1369	113.40	113.40	112.13	+	0.00	+	1.13
<i>Misc. goods and services</i>	5.0174	313.56	312.20	273.42	+	0.44	+	14.68
87 Personal Grooming Services	1.5363	303.16	302.62	278.31	+	0.18	+	8.93
88 Appliances/Articles/Products	2.2746	256.28	254.90	233.19	+	0.54	+	9.90
89 Personal Effects n.e.c.	1.2065	434.79	432.42	343.04	+	0.55	+	26.75

Annexure C: Wholesale Price Indices by Major Groups & Commodities (2015-16=100)

Item and Specification	Weight	Index Numbers			% Change in Nov 2024 over			
		Nov 24	Oct 24	Nov 23	Oct 2024	Nov 2023		
General	100.0000	313.11	313.50	306.10	-	0.12	+	2.29
Agriculture Forestry & Fishery	25.7674	283.65	291.04	271.31	-	2.54	+	4.55
001 Wheat	0.6297	236.70	230.65	355.38	+	2.62	-	33.40
002 Maize	0.6764	274.53	273.61	230.15	+	0.34	-	19.28
003 Rice	2.4413	335.71	337.63	360.01	-	0.57	-	6.75
004 Sorghum / Jowar	0.0214	288.82	285.72	280.71	+	1.08	+	2.89
005 Millet / Bajra	0.0374	254.96	268.57	259.31	-	5.07	-	1.68
006 Vegetables	1.2441	350.98	461.76	341.13	-	23.99	+	2.89
007 Fresh Fruits	1.5144	202.16	230.58	179.44	-	12.33	+	12.66
008 Dry Fruits	0.2478	349.18	359.22	320.98	-	2.79	+	8.79
009 Cotton Seeds	1.1511	205.54	188.84	174.22	+	8.84	+	17.98
010 Other Oil Seeds	0.0722	293.71	284.66	286.83	+	3.18	+	2.40
011 Edible Roots / Potatoes	0.2540	511.02	461.14	600.70	+	10.82	-	14.93
012 Stimulant & Spice Crops	0.1634	566.58	668.44	461.06	-	15.24	+	22.89
013 Pulses	0.4901	305.68	309.87	255.30	-	1.35	+	19.73
014 Sugar Crops	1.0725	305.73	317.48	236.33	-	3.70	+	29.37
015 Fibre Crops	5.3169	339.17	339.64	332.96	-	0.14	+	1.87
016 Unmanufactured Tobacco	0.0742	566.21	583.59	482.60	-	2.98	+	17.32
017 Poultry	0.5633	261.19	319.98	248.58	-	18.37	+	5.07
018 Raw Milk from Bovine Animals	7.0279	246.78	246.84	226.55	-	0.02	+	8.93
019 Eggs	0.5034	402.53	343.27	388.96	+	17.26	+	3.49
020 Raw Animal Materials / Wool	0.0351	242.58	230.73	134.93	+	5.14	+	<u>79.78</u>
021 Hides, Skins & Fur Skins, Raw	0.4834	54.57	54.56	52.80	+	0.02	+	3.35
022 Fuel Wood in Logs	0.0179	197.21	187.09	182.18	+	5.41	+	8.25
023 Fish Live Fresh or Chilled	1.7295	221.93	222.24	200.00	-	0.14	+	10.97
Ores/Minerals, Elec., Gas & Water	12.0069	366.60	366.68	350.19	-	0.02	+	4.69
024 Coal not Agglomerated	0.7508	227.51	227.51	194.29	+	0.00	+	17.10
025 Natural Gas Liquified	5.7065	419.49	418.10	428.24	+	0.33	-	2.04
026 Salt & Pure Sodium Chloride	0.0584	407.14	405.15	349.50	+	0.49	+	16.49
027 Electrical Energy	5.4912	330.22	331.86	290.40	-	0.49	+	13.71
Food, Beverages, Tobacco, Textil	31.1122	276.38	272.86	260.49	+	1.29	+	6.10
Food Products, Beverages & Tobacco	20.0718	291.32	286.87	275.69	+	1.55	+	5.67
028 Meat of Animals	3.4559	317.03	310.57	268.89	+	2.08	+	17.90
029 Vegetables & Fruit Juice	0.0058	240.11	240.09	237.55	+	0.01	+	1.08
030 Dried Fruits & Nuts	0.1733	389.75	384.99	356.45	+	1.24	+	9.34
031 Fruit Juices	0.3880	270.64	270.83	250.30	-	0.07	+	8.13
032 Vegetable Oils Refined	1.9242	286.39	273.73	279.77	+	4.62	+	2.37
033 Vegetable Ghee	1.5632	356.36	329.35	318.78	+	8.20	+	11.79
034 Oil Cakes	0.9611	261.53	260.89	260.76	+	0.25	+	0.30
035 Processed Liquid Milk	4.4437	320.28	320.66	254.03	-	0.12	+	26.08
036 Milk & Cream in Solid Form	0.0316	296.19	295.87	258.89	+	0.11	+	14.41
037 Ice Cream	0.0047	200.56	200.56	198.75	+	0.00	+	0.91
038 Dairy Products N.E.C	0.0117	325.65	324.30	262.64	+	0.42	+	23.99
039 Wheat Flour	2.3034	241.94	241.07	356.70	+	0.36	-	32.17
040 Other Cereal Flour	0.0604	347.00	352.62	217.66	-	1.59	+	<u>59.42</u>
041 Sugar Refined	1.7975	214.65	219.99	220.85	-	2.43	-	2.81
042 Chocolate	0.0139	144.02	124.44	122.85	+	15.73	+	17.23
043 Sugar Confectionary	0.0738	307.13	240.81	236.41	+	27.54	+	29.91
044 Coffee & Tea	0.7303	281.18	275.84	275.18	+	1.94	+	2.18
045 Spices	0.1449	300.81	302.92	370.72	-	0.70	-	18.86
046 Other Food Products	0.0336	235.77	235.77	230.54	+	0.00	+	2.27
047 Mineral Water	0.0207	206.09	206.22	209.13	-	0.06	-	1.45
048 Beverages	0.6303	264.17	264.17	255.10	+	0.00	+	3.56
049 Tobacco Products	1.2998	280.52	280.52	259.58	+	0.00	+	8.07
Textiles & Apparels	10.3289	253.26	251.41	236.17	+	0.74	+	7.24
050 Cotton Yarn	5.2491	239.61	239.61	239.61	+	0.00	+	0.00
051 Nylon Yarn	0.1719	95.24	95.24	95.24	+	0.00	+	0.00
052 Blended Yarn	0.1689	148.12	148.12	148.12	+	0.00	+	0.00
053 Woven Fabrics	0.0128	255.78	255.78	237.72	+	0.00	+	7.60
054 Cotton Fabrics	0.6343	336.14	336.14	281.56	+	0.00	+	19.38
055 Other Fabrics	1.1016	259.14	259.11	211.53	+	0.01	+	22.51
056 Silk & Reyon Fabrics	0.7350	397.84	395.84	344.94	+	0.51	+	15.34
057 Towels	0.1235	202.83	202.83	193.57	+	0.00	+	4.78

Annexure C: Wholesale Price Indices by Major Groups & Commodities (2015-16=100)

Item and Specification	Weight	Index Numbers			% Change in Nov 2024 over	
		Nov 24	Oct 24	Nov 23	Oct 2024	Nov 2023
058 Blankets	0.0029	154.71	148.31	140.52	+ 4.32	+ 10.10
059 Bed Sheets	0.0913	203.64	187.46	167.07	+ 8.63	+ 21.89
060 Quilts	0.0019	243.00	235.68	210.13	+ 3.11	+ 15.64
061 Woolen Carpets	0.0383	177.15	177.15	173.86	+ 0.00	+ 1.89
062 Synthetic Carpets	0.0566	156.16	156.01	150.90	+ 0.10	+ 3.49
063 Hosiery Products	0.8832	205.58	199.42	189.65	+ 3.09	+ 8.40
064 Readymade Garments	1.0576	265.35	255.32	235.81	+ 3.93	+ 12.53
Leather Products	0.7115	190.25	188.92	184.66	+ 0.70	+ 3.03
065 Leather Without Hair	0.2973	182.58	182.58	181.35	+ 0.00	+ 0.68
066 Other Leather N.E.C	0.2567	164.62	164.62	158.95	+ 0.00	+ 3.57
067 Footwears	0.1575	246.48	240.49	232.83	+ 2.49	+ 5.86
Other Transportable Goods	22.3979	339.62	337.73	359.93	+ 0.56	- 5.64
068 Timber	0.0165	243.38	241.74	222.58	+ 0.68	+ 9.34
069 Printing Paper	0.4279	262.88	262.88	254.93	+ 0.00	+ 3.12
070 Hard Board	0.1579	261.62	261.62	209.29	+ 0.00	+ 25.00
071 Motor Spirit	1.6268	351.63	349.66	401.21	+ 0.56	- 12.36
072 Diesel Oil	5.4849	320.58	311.79	387.59	+ 2.82	- 17.29
073 Kerosene Oil	0.2151	320.79	311.75	407.94	+ 2.90	- 21.36
074 Furnace Oil	3.2664	556.43	556.43	635.06	+ 0.00	- 12.38
075 Mobil Oil	0.7114	251.76	251.76	236.05	+ 0.00	+ 6.66
076 Chemicals	1.7720	268.59	271.88	299.90	- 1.21	- 10.44
077 Dyeing Material	0.1539	272.52	272.52	220.27	+ 0.00	+ 23.72
078 Fertilizers	2.8657	279.27	281.47	245.64	- 0.78	+ 13.69
079 Pesticides	0.2763	196.60	196.04	186.07	+ 0.29	+ 5.66
080 Insecticides	0.1276	174.37	174.37	151.05	+ 0.00	+ 15.44
081 Paints & Varnishes	0.1916	276.93	271.21	266.66	+ 2.11	+ 3.85
082 Medicines	1.1428	350.57	346.39	306.71	+ 1.21	+ 14.30
083 Soaps & Detergents	0.8168	234.11	234.42	226.34	- 0.13	+ 3.43
084 Auto Tyres	0.2703	261.69	261.63	247.00	+ 0.02	+ 5.95
085 Plastic Products	0.4550	206.87	205.07	188.62	+ 0.88	+ 9.68
086 Glass sheets	0.2089	360.22	360.22	339.41	+ 0.00	+ 6.13
087 Other Glass Articles	0.1635	215.81	213.85	207.34	+ 0.92	+ 4.09
088 Ceramics & Sanitary Fixture	0.0244	225.53	225.53	196.31	+ 0.00	+ 14.88
089 Bricks, Blocks & Tiles	0.1566	203.89	203.93	191.17	- 0.02	+ 6.65
090 Cement	1.8145	293.30	296.48	232.29	- 1.07	+ 26.26
091 Bed Foam	0.0006	331.21	335.19	331.58	- 1.19	- 0.11
092 Matches	0.0505	3329.35	3329.35	3306.56	+ 0.00	+ 0.69
Metal Product, Machinery & Equipments	8.7156	389.47	389.45	372.74	+ 0.01	+ 4.49
093 Steel Bar & Sheets	1.4615	326.28	327.94	349.40	- 0.51	- 6.62
094 Pipe Fittings	0.0780	498.57	498.57	428.38	+ 0.00	+ 16.38
095 Steel Products	0.3879	275.75	263.06	243.23	+ 4.82	+ 13.37
096 Engines & Motors	0.0046	186.89	186.89	145.36	+ 0.00	+ 28.57
097 Vacuum Pumps	0.0155	107.56	107.56	107.56	+ 0.00	+ 0.00
098 Air Conditioners	0.0049	309.58	310.06	314.34	- 0.15	- 1.51
099 Cultivators	0.0551	351.39	365.42	361.67	- 3.84	- 2.84
100 Chuff Cutter	0.1293	504.72	504.72	504.72	+ 0.00	+ 0.00
101 Tractors	0.0028	320.14	320.14	297.43	+ 0.00	+ 7.64
102 Lathe Machines	0.0525	488.10	482.10	468.00	+ 1.24	+ 4.29
103 Concrete Mixture	0.0107	426.37	426.37	323.61	+ 0.00	+ 31.75
104 Fridge,WashM,SewM,Fans,Iron	1.1645	301.65	297.03	267.48	+ 1.56	+ 12.77
105 Electric Wires	0.0912	335.93	330.36	263.39	+ 1.69	+ 27.54
106 Lighting Equipments	1.4431	757.41	762.81	701.76	- 0.71	+ 7.93
107 Radio & Television	0.1843	190.53	190.53	196.21	+ 0.00	- 2.89
108 Motor Vehicles	0.0244	256.95	256.95	254.58	+ 0.00	+ 0.93
109 Motorcycles	0.2570	263.76	263.76	263.76	+ 0.00	+ 0.00
110 Bicycles	3.3483	318.93	318.93	308.80	+ 0.00	+ 3.28
